



PRICED AT  
**\$867,175**

 2388 Sq Ft

 4 Beds

 3.5 Baths

 2 Car Garage

 3.0 Story

New Home, New Year, New You! \*\*\*MOVE-IN READY!!!\*\*\* ~~~ \$30,000 to use ANY WAY YOU WANT on contracts written prior to 2/29/24 using one of our 5-Preferred Lenders and close in March'24~~~ MODEL HOME FOR SALE!!!! ~~~ You are greeted with a front fenced turf courtyard as you approach the Benton floorplan. Main floor entry into a spacious OPEN Family Room, dining area and kitchen. As you enter, you will immediately notice the light grey stone fireplace with a natural box beam mantel - it is sure to be the focal point for family room gatherings. Next you will be drawn to the WHITE AND GRAY DESIGN FEATURES in the kitchen. Stacked white cabinets and a gray island with quartz countertops are a show stopper. The island is a central spot while prepping for dinner. Add some barstools for casual dining. Around the corner from the kitchen is the laundry room and the sunroom which leads to a covered deck area. HARDWOOD floors on the main flow throughout the rest of the home while hardwood stair treads lead you to the bedrooms. The owners suite is located on the upper floor and has plenty of room for a king size ...

**Want to Know More  
About This Home?**

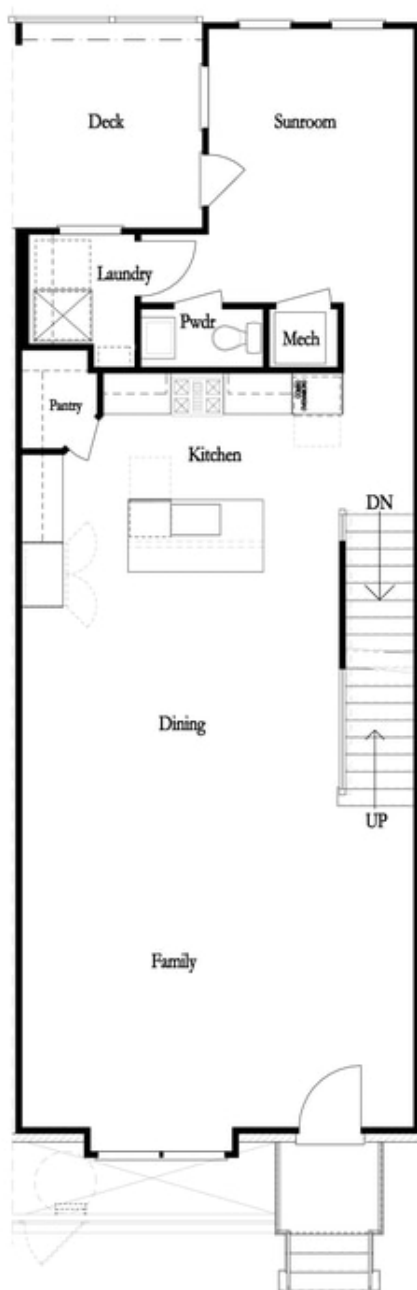
CONTACT OUR COMMUNITY SALES MANAGER  
Call Us @ 470.436.2641



First Floor

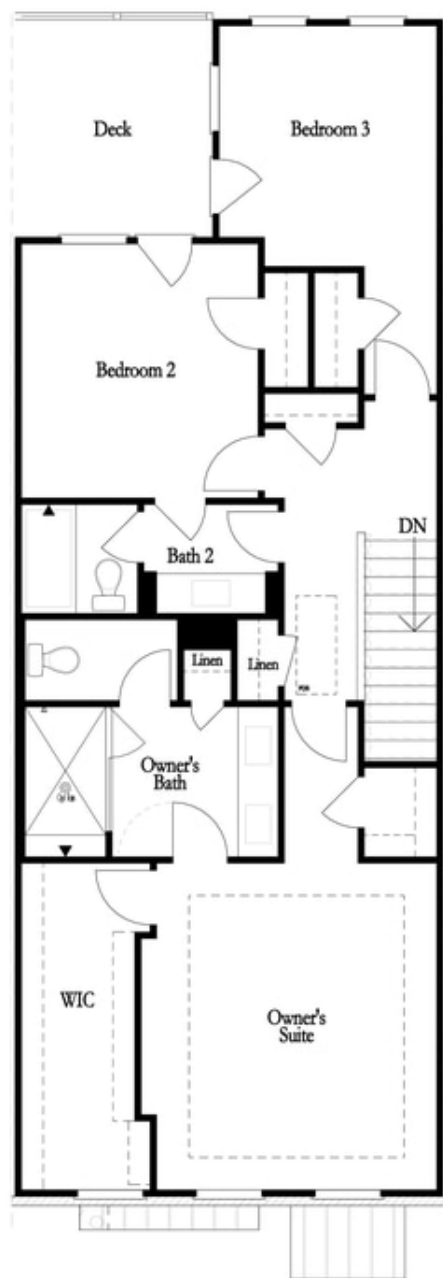
**Want to Know More  
About This Home?**

CONTACT OUR COMMUNITY SALES MANAGER  
Call Us @ 470.436.2641



**Want to Know More  
About This Home?**

CONTACT OUR COMMUNITY SALES MANAGER  
Call Us @ 470.436.2641



**Want to Know More  
About This Home?**

CONTACT OUR COMMUNITY SALES MANAGER  
Call Us @ 470.436.2641

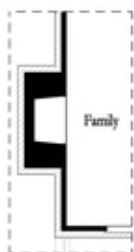


Left End  
Opt. Sprinkler Room

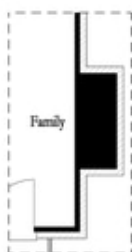


Right End  
Opt. Sprinkler Room

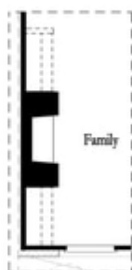
First Floor Options



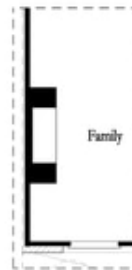
Opt. Exterior Fireplace



Opt. Faux Exterior  
Fireplace



Opt. Fireplace



Opt. Linear Fireplace

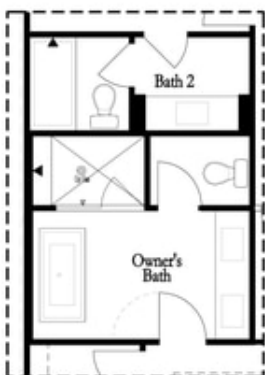
Second Floor Options

Want to Know More  
About This Home?

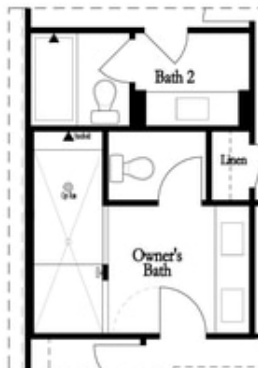
CONTACT OUR COMMUNITY SALES MANAGER  
Call Us @ 470.436.2641

### Options

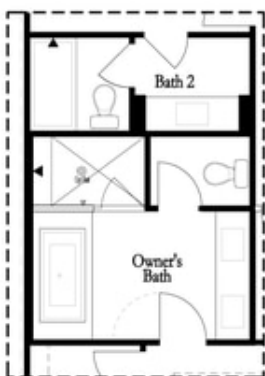
#### Third Floor Options



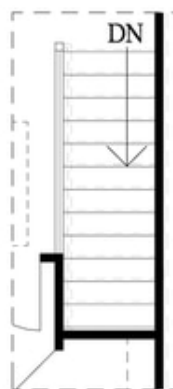
Opt. Freestanding  
Tub/Shower Combo



Opt. Walk-Through Shower



Opt. Decked  
Tub/Shower Combo



Opt. Open Rail

Want to Know More  
About This Home?

CONTACT OUR COMMUNITY SALES MANAGER  
Call Us @ 470.436.2641