



PRICED AT
\$707,250

 2268 Sq Ft

 3 Beds

 3.5 Baths

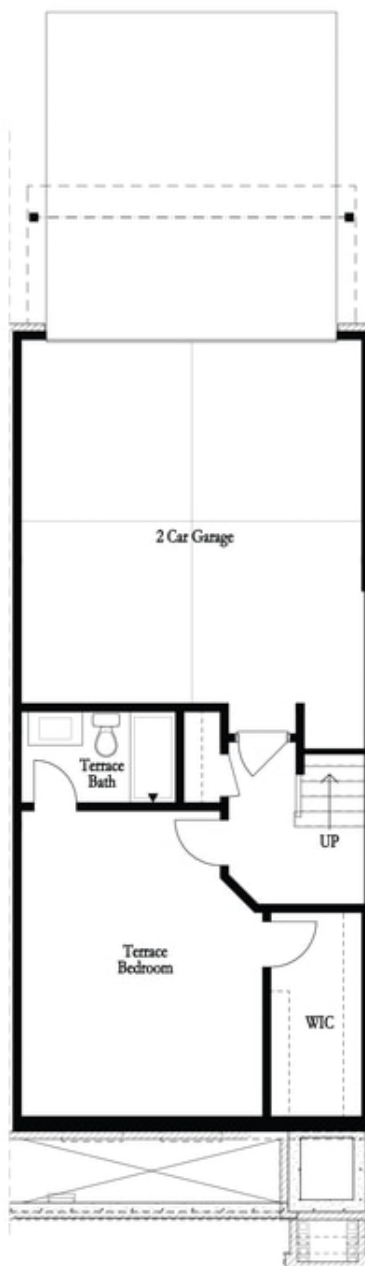
 2 Car Garage

 3.0 Story

SPRING INTO A NEW HOME WITH . . \$10,000 ANY WAY YOU WANT .MUST CLOSE BY THE END OF MAY. THIS IS END UNIT - Featuring our newly upgraded Cool Stone Design Collection - Homesite 53 includes a private bedroom on the terrace level with full bath & spacious walk-in closet + entry on Main Level. Main Level offers a Gourmet Kitchen with sought-after, modern features such as MSI Quartz Countertops, Full Overlay Cabinets w/ soft close doors & under cabinet lighting, GE Stainless Steel Appliances, Walk-In Pantry, & more! Behind the Kitchen you will find a Sunroom, perfect for an office or separate dining space w/ entry to the deck + half bath, & two separate storage closets. Kitchen Island overlooks the open concept Dining & Living Room. Centered in the Living Room is a ventless fireplace w/ stained wood mantel & stacked white quartzite surround. Staircase leading from the Main Level to the Upper-Level features metal balusters, w/ Stained Oak handrail and Oak Treads! On the Upper-Level, you will find an oversized Owner's Suite with tray ceilings and large walk-in closet, and hard surface flooring through out! Owner's Suite Bathroom includes dual vanities, linen closet, spacious shower w/ ...

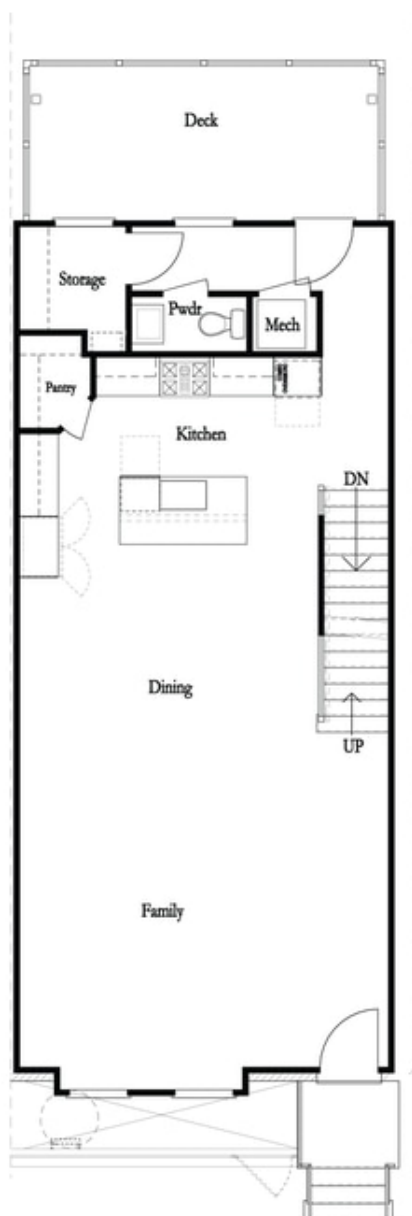
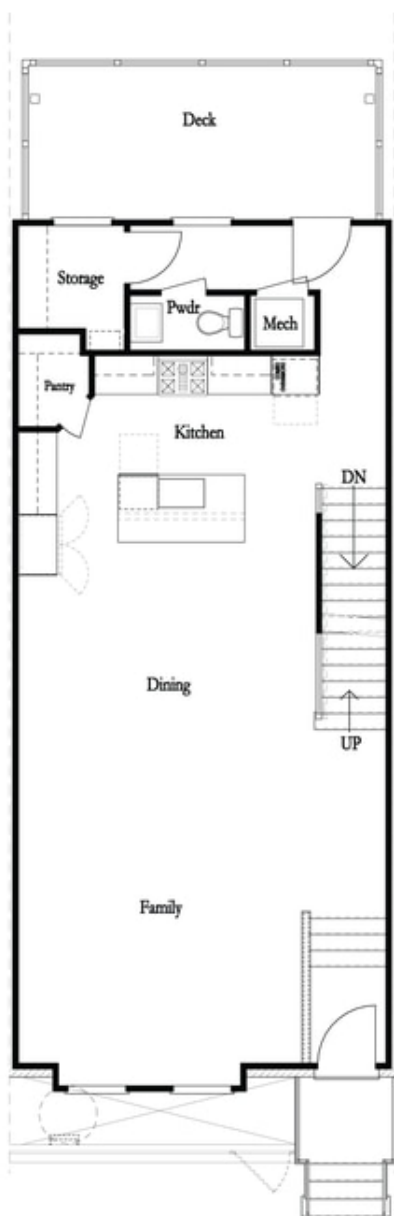
**Want to Know More
About This Home?**

CONTACT OUR COMMUNITY SALES MANAGER
Call Us @ (678) 591-1930



Want to Know More
About This Home?

CONTACT OUR COMMUNITY SALES MANAGER
Call Us @ (678) 591-1930



Want to Know More
About This Home?

CONTACT OUR COMMUNITY SALES MANAGER
Call Us @ (678) 591-1930



Want to Know More
About This Home?

CONTACT OUR COMMUNITY SALES MANAGER
Call Us @ (678) 591-1930

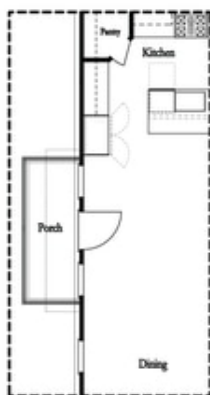


*Left End
Opt. Sprinkler Room*



*Right End
Opt. Sprinkler Room*

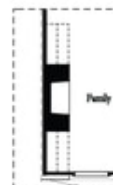
Terrace Level Options



*Optional Side Porch
End Unit Only



Opt. Sunroom



Opt. 36\" Fireplaces



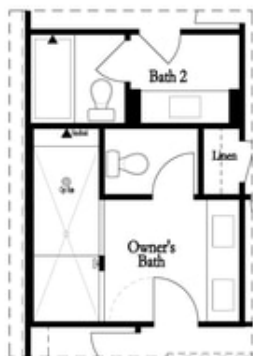
Opt. Linear Fireplaces

Main Level Options

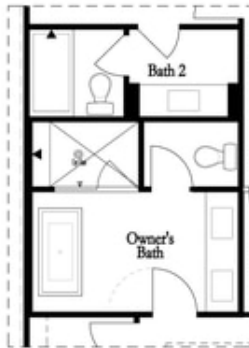
**Want to Know More
About This Home?**

CONTACT OUR COMMUNITY SALES MANAGER
Call Us @ (678) 591-1930

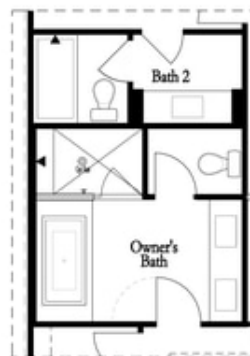
Options



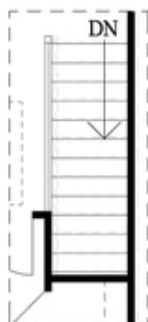
*Opt. Walk-Through
Shower*



*Opt. Freestanding
Tub/Shower Combo*



*Opt. Decked
Tub/Shower Combo*



Opt. Open Rail

Third Floor Options

**Want to Know More
About This Home?**

CONTACT OUR COMMUNITY SALES MANAGER
Call Us @ (678) 591-1930