



PRICED AT
\$1,053,780

 2325 Sq Ft

 4 Beds

 3.5 Baths

 2 Car Garage

 3.0 Story

Spring into a New Home! ~END UNIT + FREE STANDING TUB + NEW ELEVATION~ Move In Ready! Elevate your life in 2024 with a new home by The Providence Group. Spring into a New Home! \$20,000 Incentive ANY WAY YOU WANT when using one of our 5 Preferred Lenders! Home Site 7 just released for sale! New exterior elevation on home site 7 features 2 sets of French doors with covered balcony right off your living room!! The Chaucer Home Design showcases a front entry, 3 story townhome with 4 bedrooms & 3.5 bathrooms. The Chaucer sits over 25 ft wide making this space feel more like a single family home lives. Enjoy open concept layouts with mindful outdoor patios and a fenced in backyard. Extra wide split staircases creates an elevated entryway with electrical options for your showcase chandelier. Kitchen sits in the back of home enticing guest into the home while the dining room separate the living room located in the front of home. 10 ft ceilings and back patios make this a great meeting home for when friends and family come to visit Alpharetta. 2 Guest Bedrooms + Full Bathroom + Owners suite is located on the ...

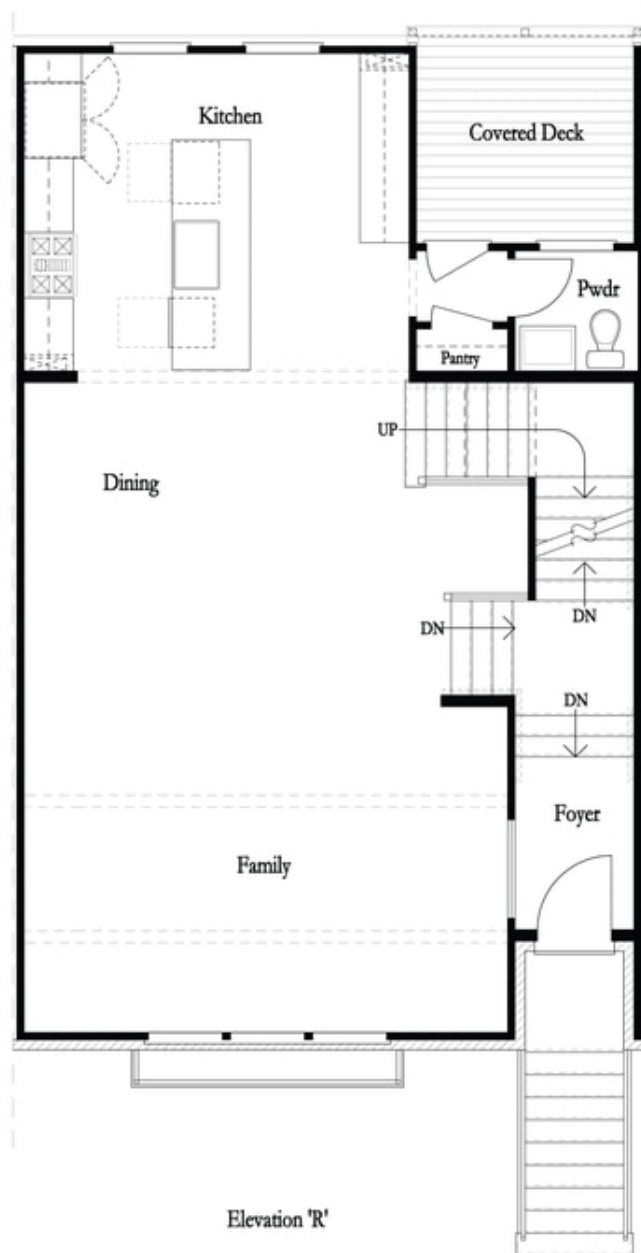
**Want to Know More
About This Home?**

CONTACT OUR COMMUNITY SALES MANAGER
Call Us @ 470-248-2777



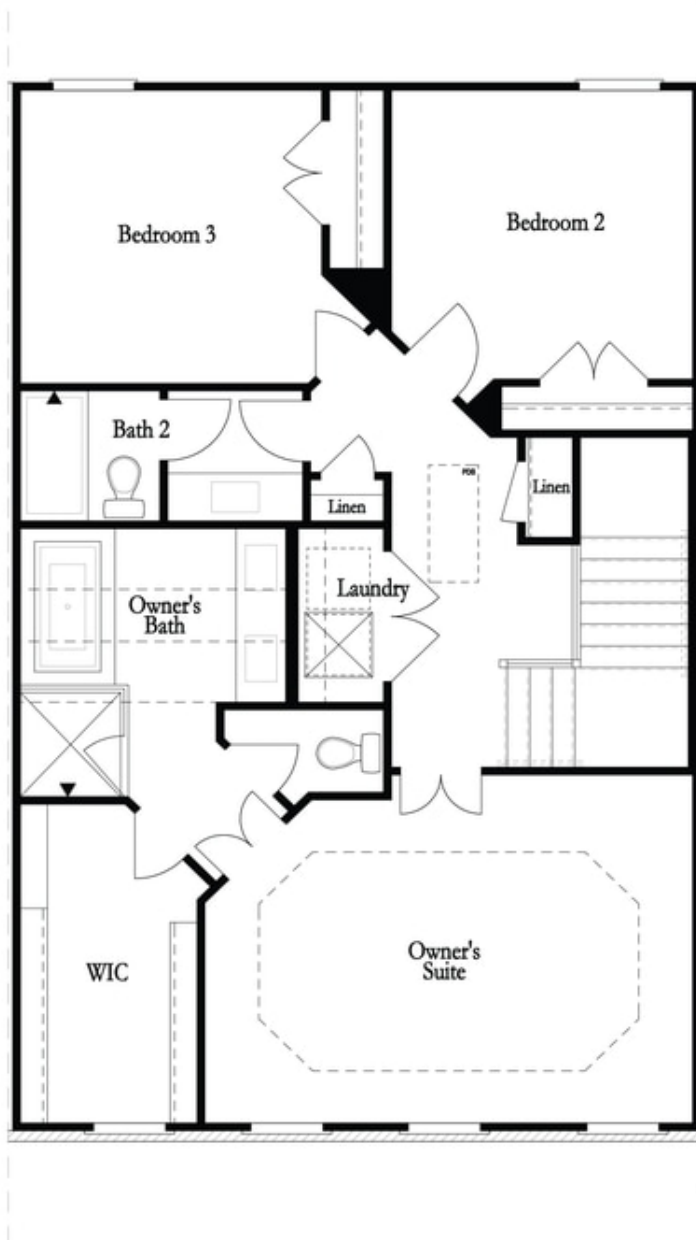
**Want to Know More
About This Home?**

CONTACT OUR COMMUNITY SALES MANAGER
Call Us @ 470-248-2777



**Want to Know More
About This Home?**

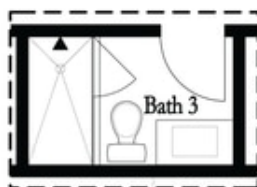
CONTACT OUR COMMUNITY SALES MANAGER
Call Us @ 470-248-2777



**Want to Know More
About This Home?**

CONTACT OUR COMMUNITY SALES MANAGER
Call Us @ 470-248-2777

Options



Optional Shower

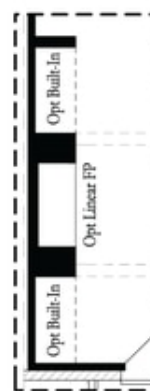
First Floor Options



Optional Walk Through Shower



Optional Fireplace



Optional Fireplace
Linear

Second Floor Options



Optional Free Standing Tub
with Shower

Third Floor Options

Want to Know More
About This Home?

CONTACT OUR COMMUNITY SALES MANAGER
Call Us @ 470-248-2777