



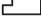




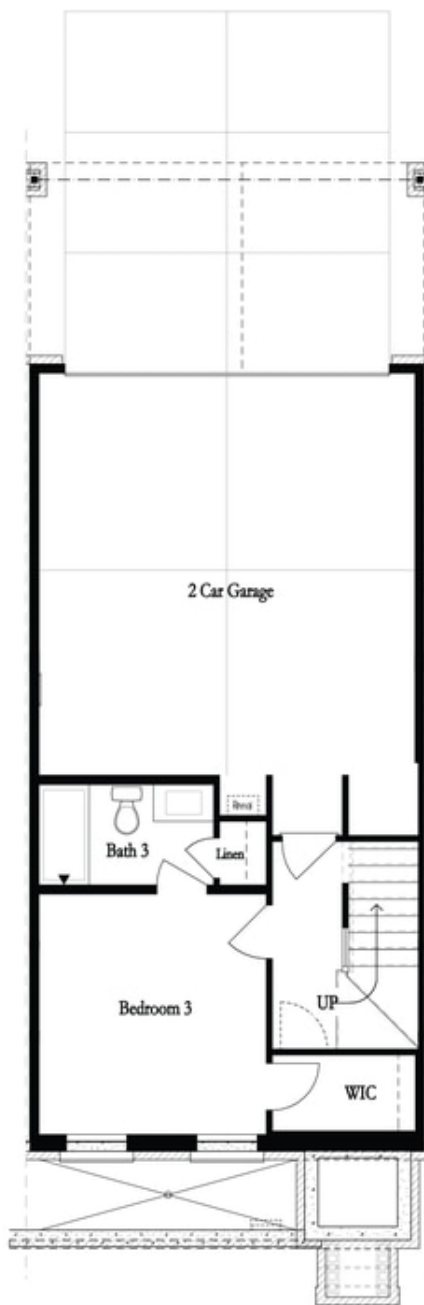
PRICED AT
\$995,295

-  2117 Sq Ft
-  3 Beds
-  3.5 Baths
-  2 Car Garage
-  3.0 Story

Spring into a New Home! The Chamberlain Home Design features 3 Bed / 3.5 Bath New Construction directly on Thompson Street! Bright, Open Kitchen mindfully situated in the front of home w/ stacked cabinets offers a timeless appeal with a modern Island with Quartz Countertop. Dining space separates kitchen from your living room featuring a modern FIREPLACE. TV Bracing, Smart Tubes, Media Outlets, and Wireless Access Points have been installed for easy setup. Additional Sunroom provides ideal Office Space or alternative seating with direct covered deck access. Upper-level features HUGE Owner's Suite + Sitting Room + Private Owner's Deck + Spacious Walk-In Closet! Owner Bath includes Cabinetry with Quartz Countertops, Spa Shower with frameless glass door & tile surround + elegant Free-Standing Tub. Guest Bedroom 2 located opposite of Owner's Wing with great size bedroom & full bath directly connected. 3rd Bedroom is located on Terrace Level featuring walk-in Closet + upgraded walk-in shower. The Chamberlain Plan is built with your life and your fur baby's life in mind. Enjoy discrete hideaway space under the stairs on the Terrace Level where your fur baby can have their bed, water bowls, & leash stored Plus this is located right at garage ...

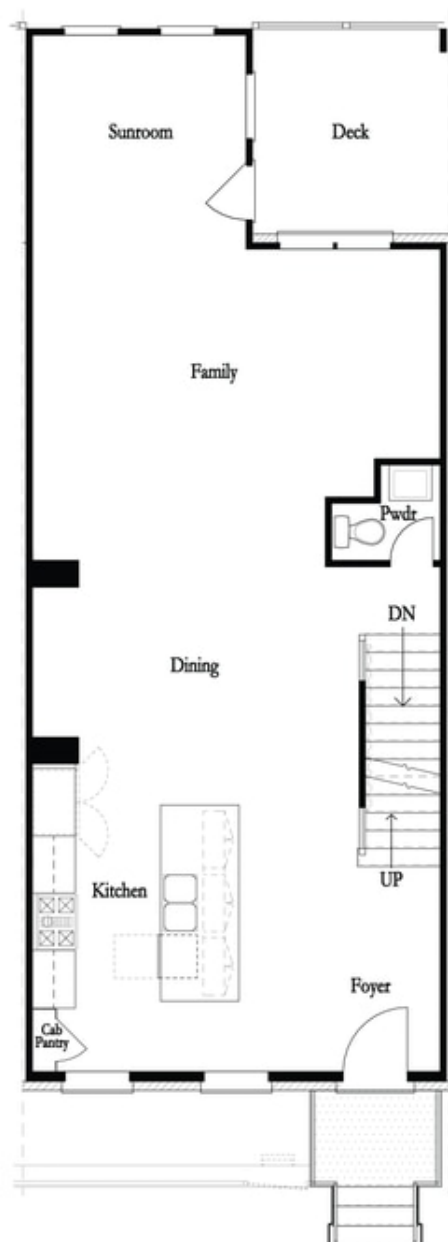
**Want to Know More
About This Home?**

CONTACT OUR COMMUNITY SALES MANAGER
Call Us @ 470-248-2777



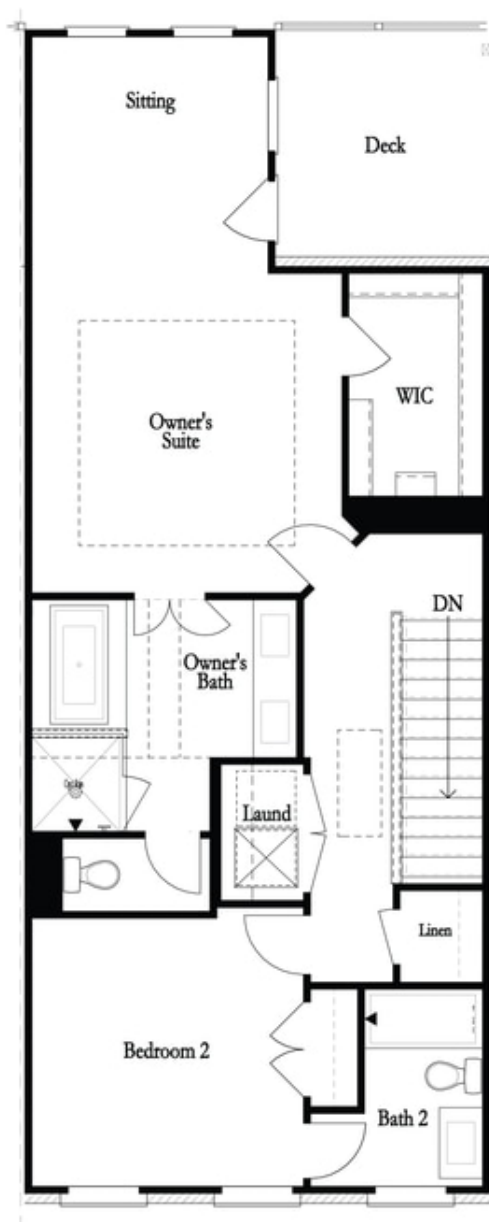
**Want to Know More
About This Home?**

CONTACT OUR COMMUNITY SALES MANAGER
Call Us @ 470-248-2777



**Want to Know More
About This Home?**

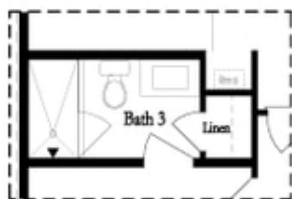
CONTACT OUR COMMUNITY SALES MANAGER
Call Us @ 470-248-2777



**Want to Know More
About This Home?**

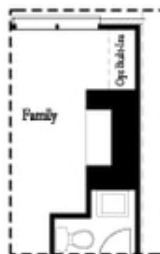
CONTACT OUR COMMUNITY SALES MANAGER
Call Us @ 470-248-2777

Optional Layouts

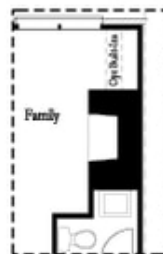


Opt. Shower

First Floor Options

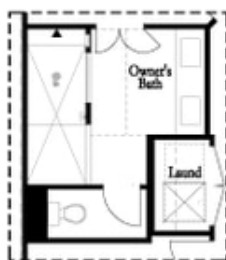


Opt. Linear Fireplace



Opt. Fireplace

Second Floor Options



Opt. Walk-Through Shower



Opt. Freestanding Tub/Shower Combo

Third Floor Options

Want to Know More
About This Home?

CONTACT OUR COMMUNITY SALES MANAGER
Call Us @ 470-248-2777