



PRICED AT  
**\$573,900**

 2030 Sq Ft

 3 Beds

 2.5 Baths

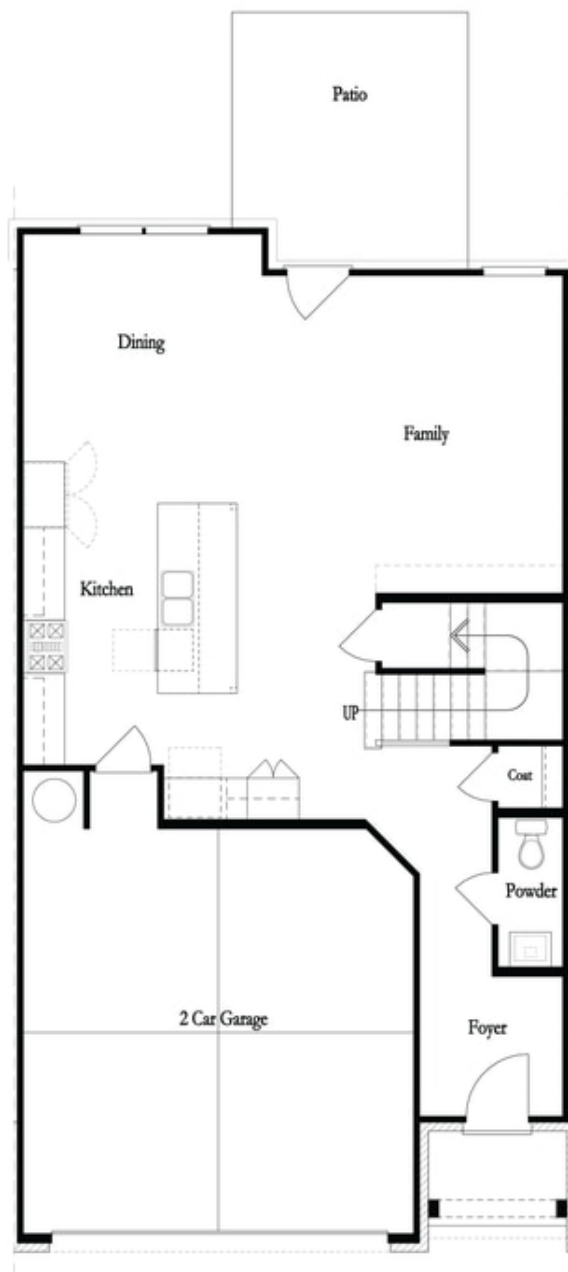
 2 Car Garage

 2.0 Story

Spring into a New Home! QUICK MOVE IN HOME Incredible End Unit in Gated Community by The Providence Group in the highly anticipated location. This popular 2 story Stockton Floor Plan has an upgraded 12ft Sliding door leading to your Covered Patio and fenced backyard. This open concept plan offers a front car garage with entry on main level that leads you to a family room, dining room and a beautifully designed kitchen that has a Large island, quartz countertops, stainless appliances and tile backsplash. When you head to the 2nd floor you will enter a spacious owner's suite with a Large Shower, dual vanities with quartz countertops & walk in closet. The laundry room is conveniently located on the upper level. Finishing out the 2nd floor are 2 secondary bedrooms & a shared bath. Carpets are only in the bedrooms. This community is in highly desirable location in unincorporated Gwinnett County and close to 3 vibrant cities - downtown Sugar Hill, Suwanee Town Center and Buford!! Incredible amenities will be Pool, fitness center, Parks and Green Space coffee bar. Easy Access to interstates, shopping and restaurants \*\*\* \$5000 towards closing cost when financing with one of Seller's 5 preferred ...

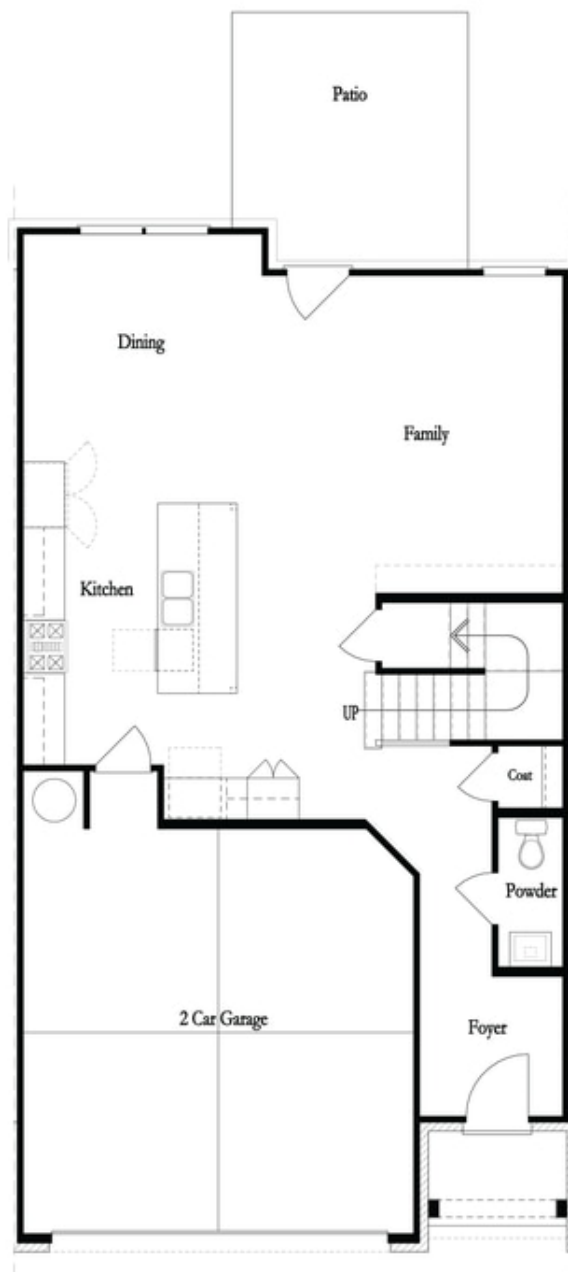
**Want to Know More  
About This Home?**

CONTACT OUR COMMUNITY SALES MANAGER  
Call Us @ 470-248-2097



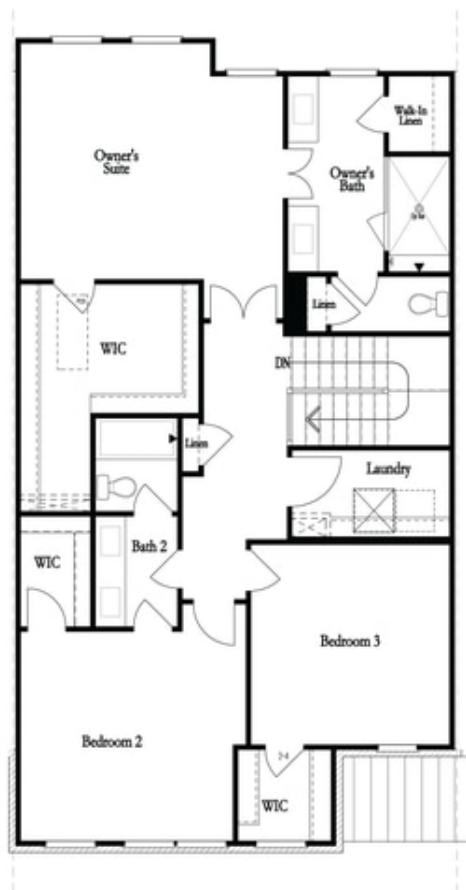
**Want to Know More  
About This Home?**

CONTACT OUR COMMUNITY SALES MANAGER  
Call Us @ 470-248-2097

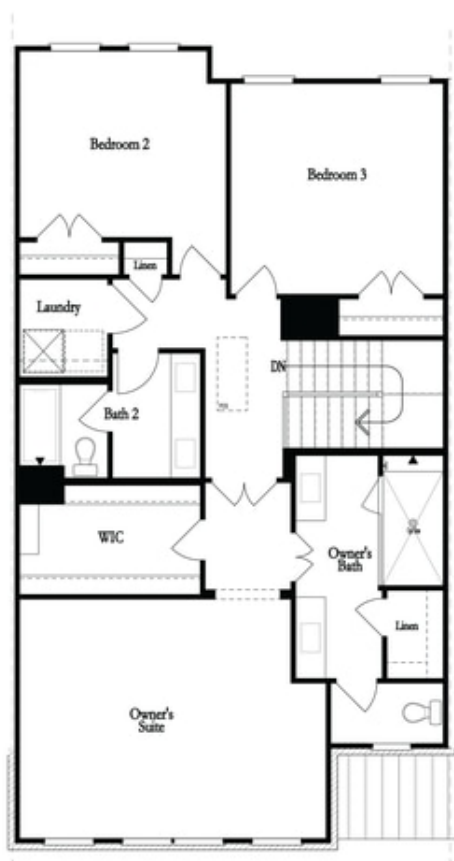


**Want to Know More  
About This Home?**

CONTACT OUR COMMUNITY SALES MANAGER  
Call Us @ 470-248-2097



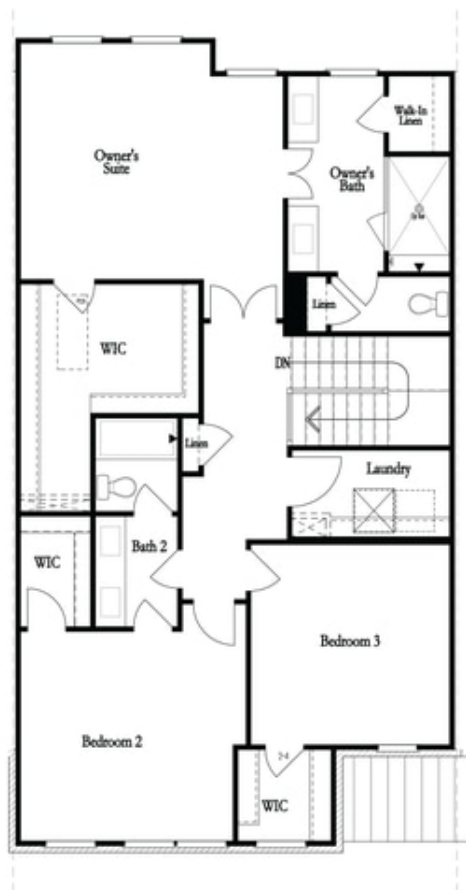
Second Floor - Owner's Rear



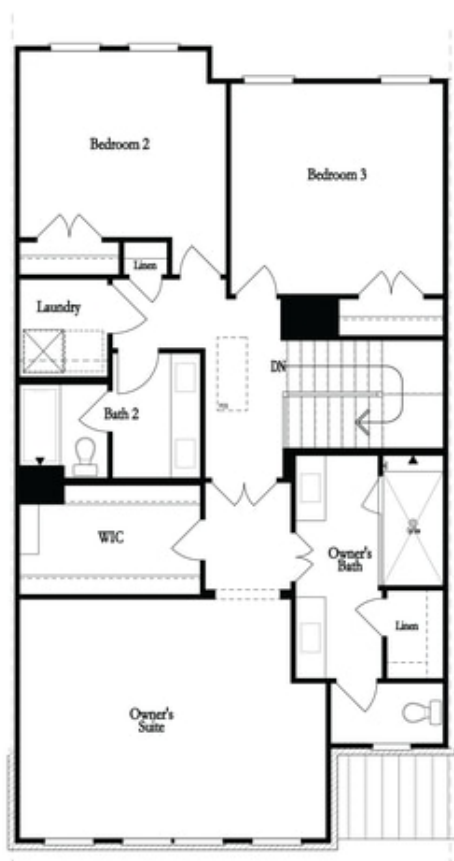
Second Floor - Owner's Front

**Want to Know More  
About This Home?**

CONTACT OUR COMMUNITY SALES MANAGER  
Call Us @ 470-248-2097



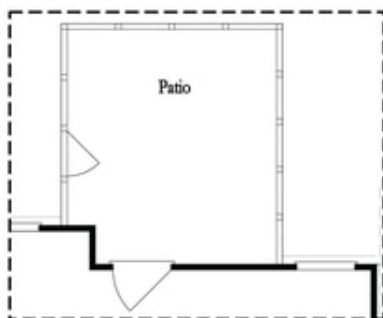
Second Floor - Owner's Rear



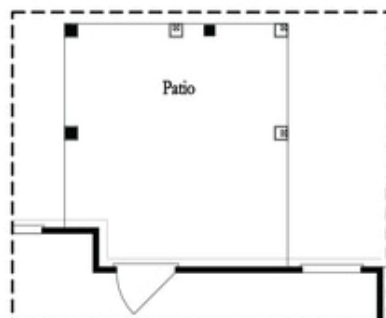
Second Floor - Owner's Front

**Want to Know More  
About This Home?**

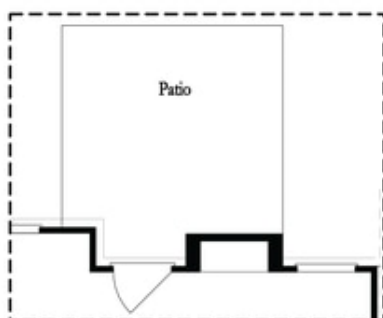
CONTACT OUR COMMUNITY SALES MANAGER  
Call Us @ 470-248-2097



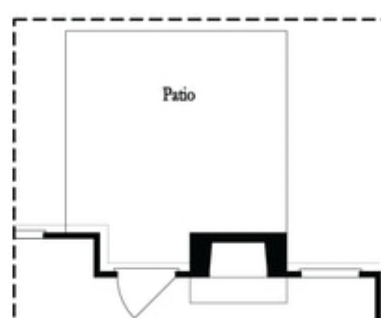
Opt. Screened Patio



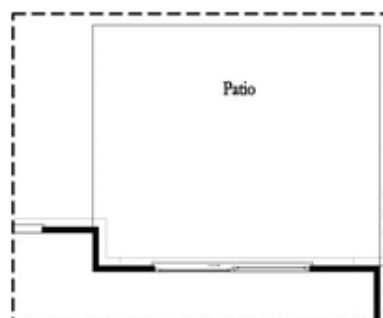
Opt. Coverd Patio



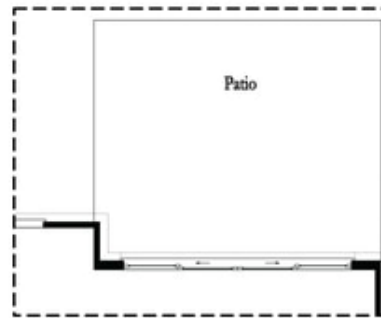
Opt. Linear Fireplace



Opt. Fireplace



Opt. 8 Foot Slider Door

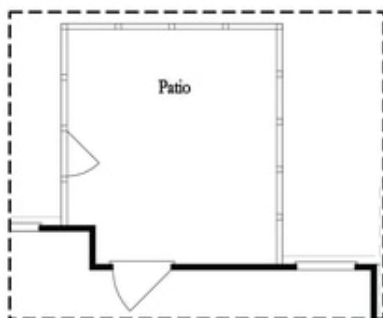


Opt. 12 Foot Slider Door

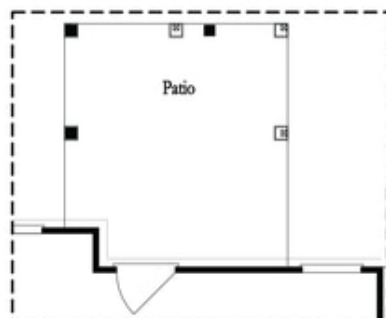
Main Level Options

**Want to Know More  
About This Home?**

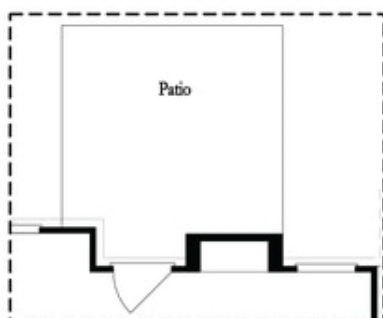
CONTACT OUR COMMUNITY SALES MANAGER  
Call Us @ 470-248-2097



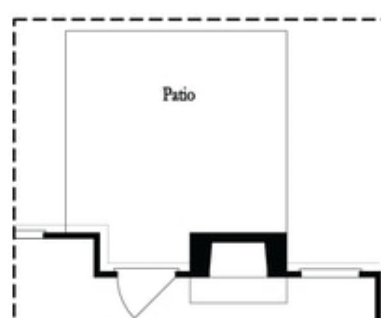
Opt. Screened Patio



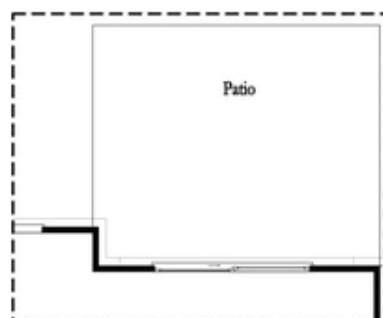
Opt. Coverd Patio



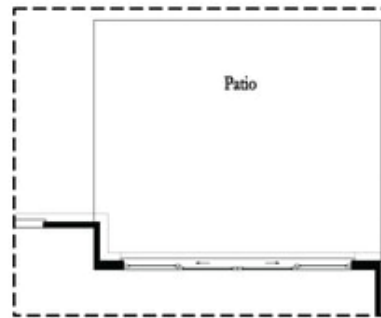
Opt. Linear Fireplace



Opt. Fireplace



Opt. 8 Foot Slider Door

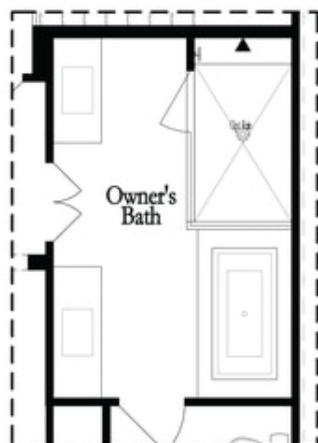


Opt. 12 Foot Slider Door

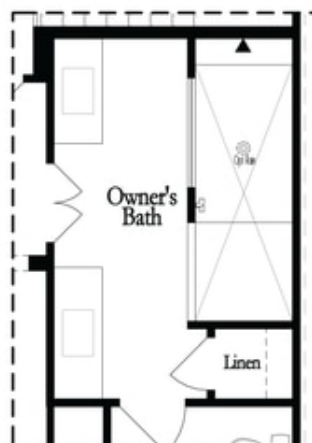
### Main Level Options

**Want to Know More  
About This Home?**

CONTACT OUR COMMUNITY SALES MANAGER  
Call Us @ 470-248-2097

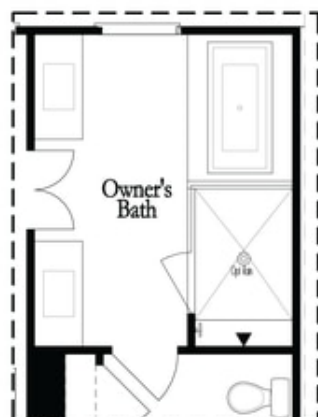


Opt. Shower/Tub

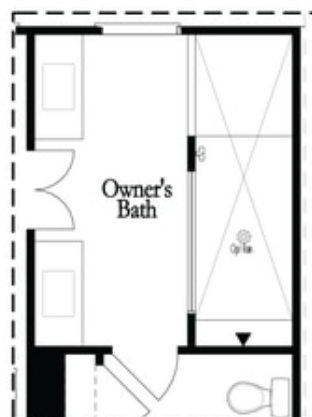


Opt. Walk-Through Shower

Owner's Front - Options



Opt. Shower/Tub



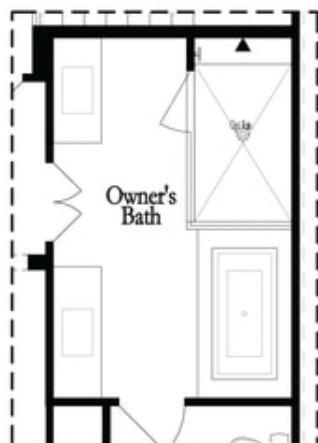
Opt. Walk-Through Shower

Owner's Rear - Options

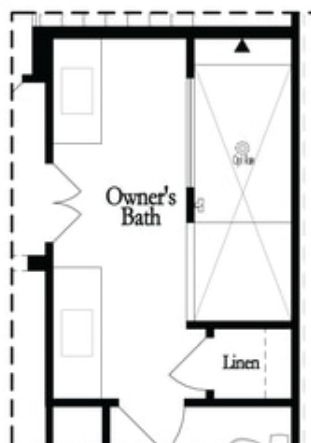
Want to Know More  
About This Home?

CONTACT OUR COMMUNITY SALES MANAGER  
Call Us @ 470-248-2097



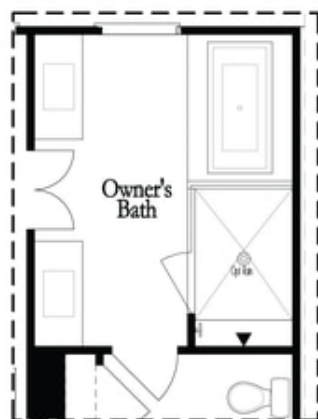


Opt. Shower/Tub

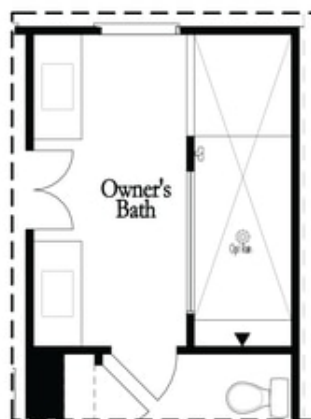


Opt. Walk-Through Shower

Owner's Front - Options



Opt. Shower/Tub



Opt. Walk-Through Shower

Owner's Rear - Options

Want to Know More  
About This Home?

CONTACT OUR COMMUNITY SALES MANAGER  
Call Us @ 470-248-2097