



PRICED FROM
\$559,900

 2,336 Sq Ft

 3 - 4 Beds

 3.5 - 4 Baths

 2 Car Garage

 2.0 Story

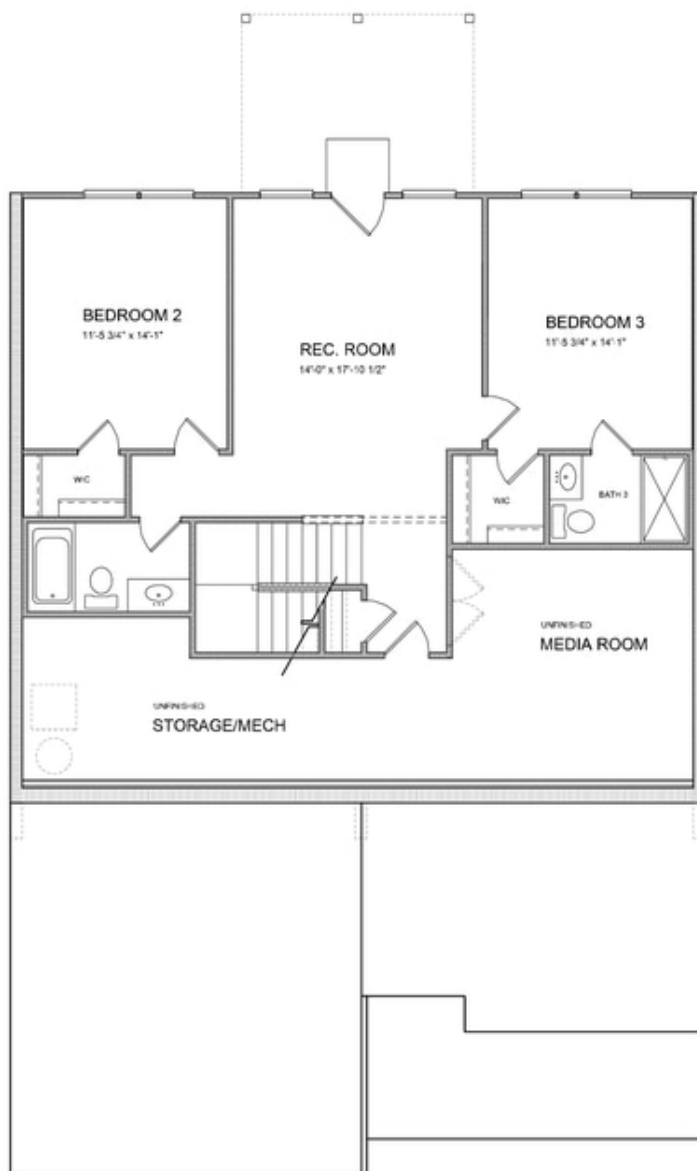
- Terrace Level Features Two Secondary Bedrooms and Rec Room
- Separate Formal Dining Room
- Open Kitchen and Living Area with Access to Outdoor Patio
- Optional Terrace Level Media Room

[Read More Online](#)

Available Elevations



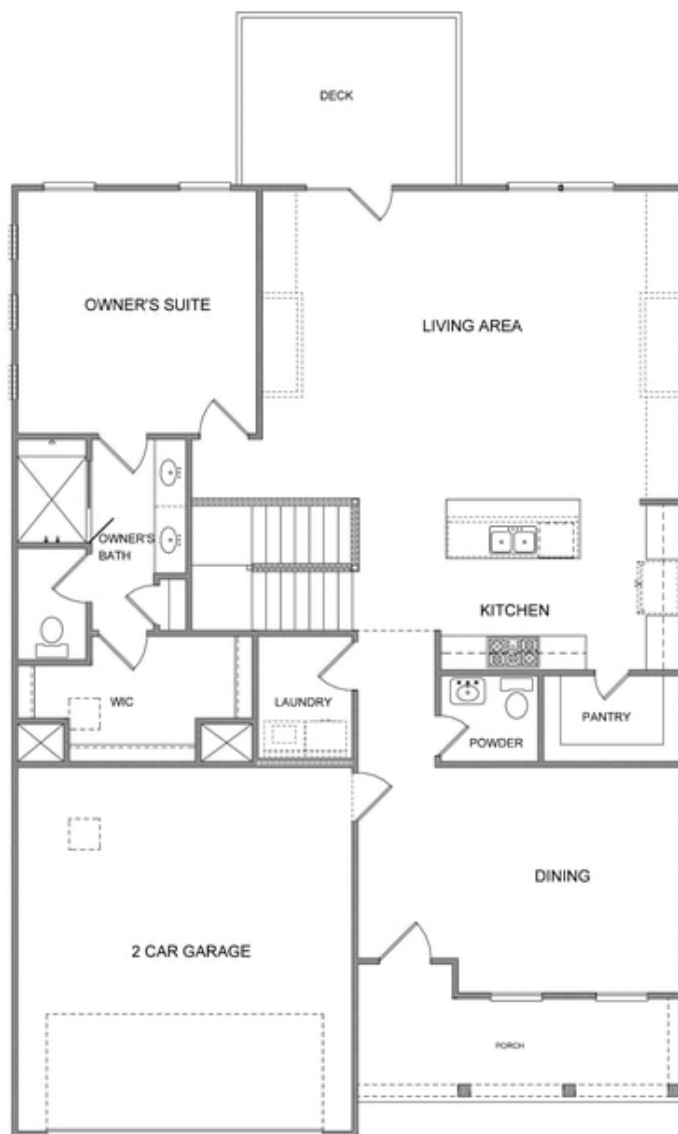
Please refer to actual blueprints for an accurate representation of home design. Home design and elevations subject to change without prior notice. Window, door and porch locations may vary by elevation. Subject to error, omission or withdrawal.



Terrace Level

Want to Know More
About This Home?

CONTACT OUR COMMUNITY SALES MANAGER
Call Us @ (470) 509-9931



Main Level

**Want to Know More
About This Home?**

CONTACT OUR COMMUNITY SALES MANAGER
Call Us @ (470) 509-9931

Optional Layouts



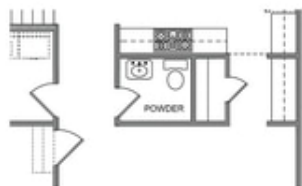
Opt Bedroom 4 & Bath 4
into Dining Room



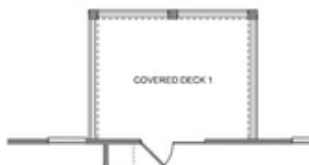
Opt Fireplace 1 on
Exterior Wall



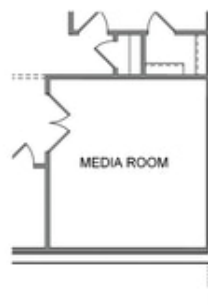
Opt Fireplace 2 on
Owner's Suite Wall



Opt Butler's Pantry



Opt Covered Deck



Opt Media Room

Want to Know More
About This Home?

CONTACT OUR COMMUNITY SALES MANAGER
Call Us @ (470) 509-9931

Optional Porch
Layouts



Opt Covered Porch 2 & Covered Porch 3



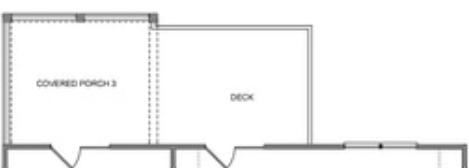
Opt Sunroom & Sitting Room



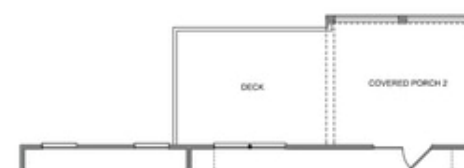
Opt Sitting Room



Opt Sunroom



Opt Covered Porch 3



Opt Covered Porch 2

Want to Know More
About This Home?

CONTACT OUR COMMUNITY SALES MANAGER
Call Us @ (470) 509-9931