



PRICED FROM
\$500,900

 2,257 - 2,263 Sq Ft

 4 Beds

 3.5 Baths

 2 Car Garage

 2.0 Story

- Separate Formal Dining Room
- Open Main Level Layout Spacious Family Room with Access to Outdoor Living
- Gourmet Kitchen with Island and Walk In Pantry
- Three Additional Bedrooms on the Upper Level with Full or Shared Bath
- Two Car Rear Entry Garage

[Read More Online](#)

Available Elevations



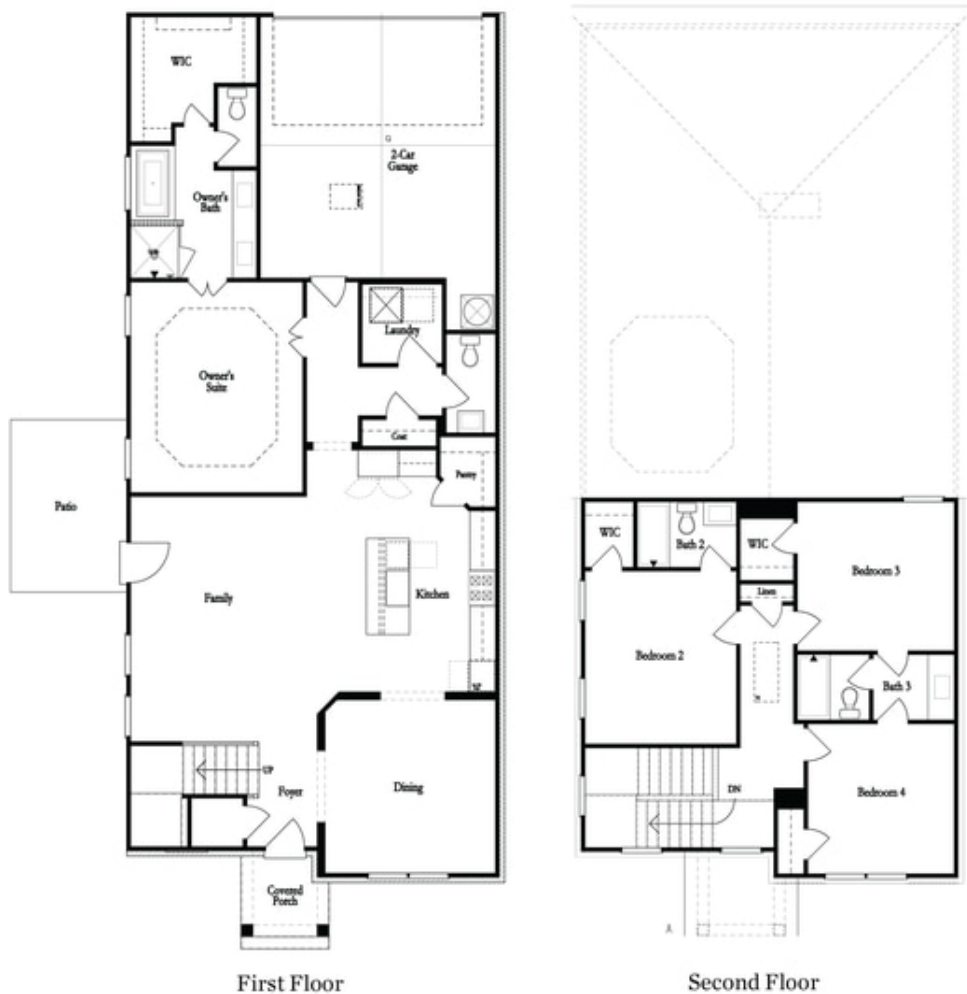
Elevation A



Elevation B

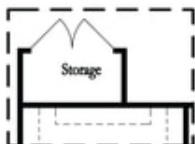


Elevation C

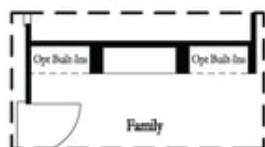


**Want to Know More
About This Home?**

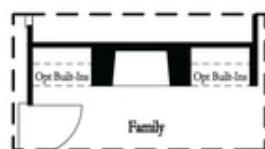
CONTACT OUR COMMUNITY SALES MANAGER
Call Us @ (470) 509-9931



Optional Storage Room

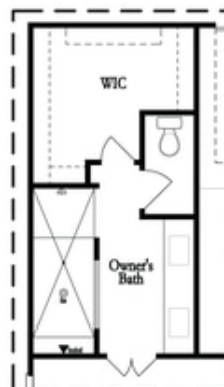


Optional Linear Fireplace



Optional Direct Vent Fireplace

First Floor Options



Optional Walk-Thru Shower

Second Floor Options

Want to Know More
About This Home?

CONTACT OUR COMMUNITY SALES MANAGER
Call Us @ (470) 509-9931