



PRICED FROM  
**\$552,400**

 2,997 Sq Ft

 4 Beds

 3.5 Baths

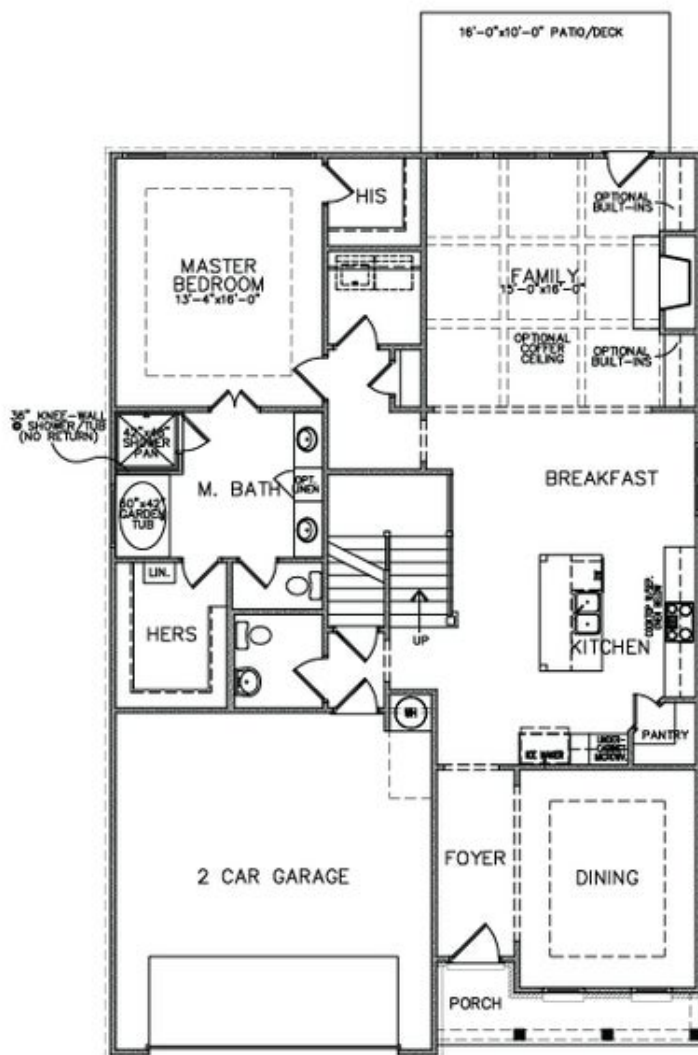
 2 Car Garage

Owner's Suite on Main Level with His and Her Walk-In Closets and Dual Vanities Spacious Gourmet Kitchen with Island with Bar Seating Overlooking Breakfast Room Optional Layout Offering Two Owner's Suites and up to 5 Bedrooms Secondary Bedrooms Feature Private or Shared Full Bath Large Storage Area on Upper Level

[Read More Online](#)

## Available Elevations

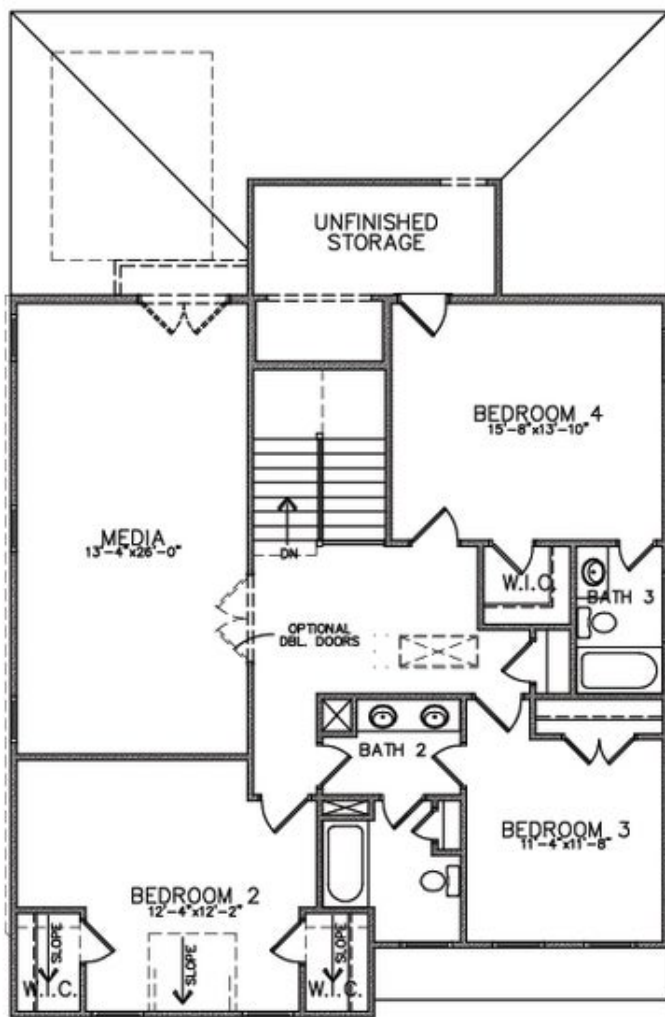




Elevation C

Want to Know More  
About This Home?

CONTACT OUR COMMUNITY SALES MANAGER  
Call Us @ (470) 509-9931

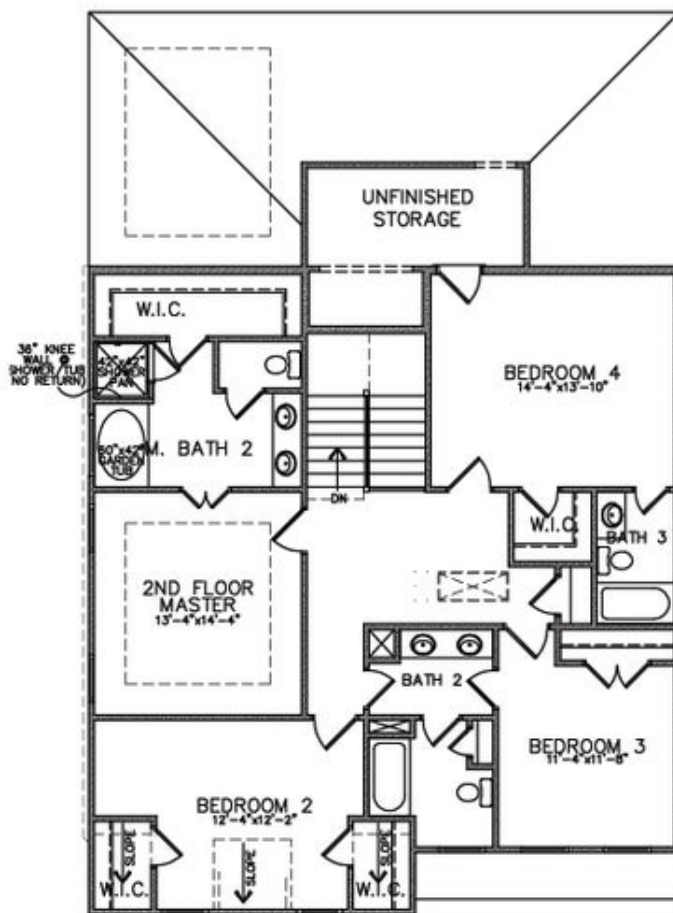


Elevation C

Want to Know More  
About This Home?

CONTACT OUR COMMUNITY SALES MANAGER  
Call Us @ (470) 509-9931

Optional  
Dual Owner Suites



Elevation C

Want to Know More  
About This Home?

CONTACT OUR COMMUNITY SALES MANAGER  
Call Us @ (470) 509-9931