



PRICED AT  
**\$726,375**

 2574 Sq Ft

 4 Beds

 3.5 Baths

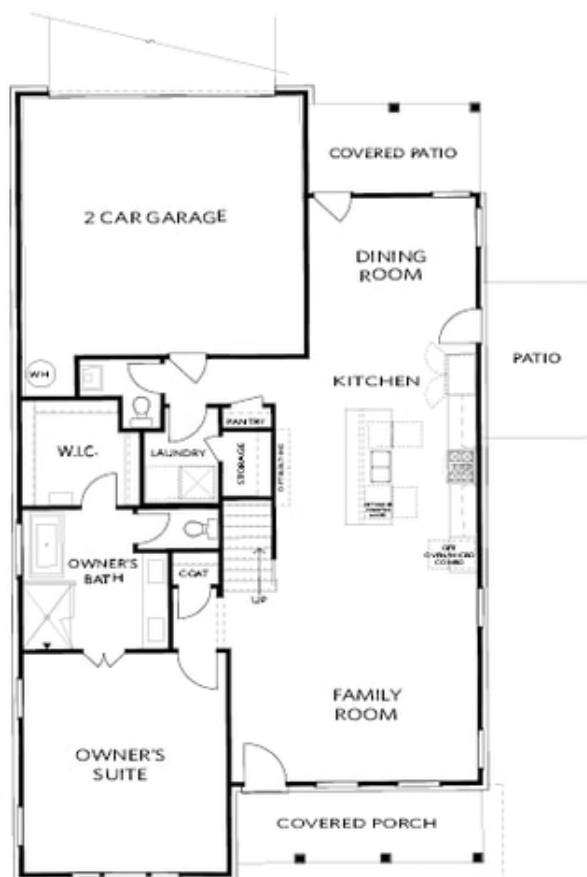
 2 Car Garage

 2.0 Story

Spring into a New Home at Evanshire! The Hillsdale Plan offers the perfect blend of luxury and practicality, with its master on the main floor and a second owner's suite upstairs. This home provides ample space for comfortable living and entertaining, with thoughtful design features throughout. As you enter from the covered front porch, you're greeted by an open family room that seamlessly flows into the kitchen and dining area. The kitchen serves as the heart of the home, with a large island featuring quartz countertops, perfect for gathering and conversation. The dining area, surrounded by windows, creates a bright and inviting space for meals with family and friends. The main floor owner's suite boasts 10' ceilings, providing a sense of openness and grandeur. The ensuite bathroom features a dual vanity and a luxurious mega walk-in rain shower with tile extending to the ceiling, ensuring a spa-like experience. A large walk-in closet adds convenience to your morning routine. The second owner's bedroom upstairs offers privacy and comfort, with its private bath featuring a dual vanity and tile shower, making it an ideal space for grandparents or guests. The upper floor also features a spacious loft area, perfect for a media ...

**Want to Know More  
About This Home?**

CONTACT OUR COMMUNITY SALES MANAGER  
Call Us @ 470-248-2103

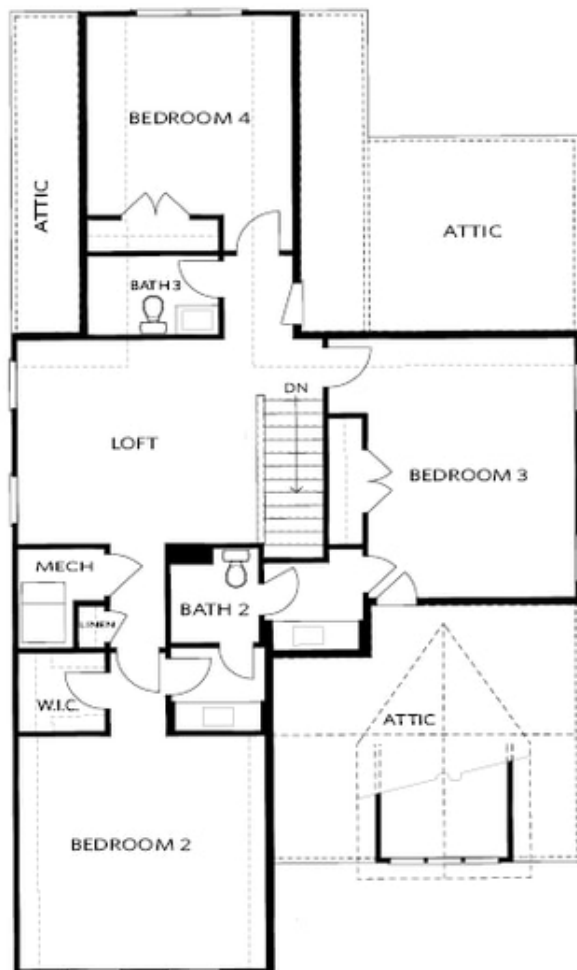


FIRST FLOOR

Elevation A

**Want to Know More  
About This Home?**

CONTACT OUR COMMUNITY SALES MANAGER  
Call Us @ 470-248-2103



SECOND FLOOR

Elevation A

**Want to Know More  
About This Home?**

CONTACT OUR COMMUNITY SALES MANAGER  
Call Us @ 470-248-2103



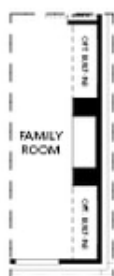
OPT Large Shower



OPT Screened Patio



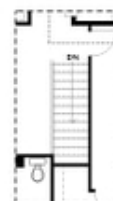
OPT 2nd Owner's Suite ilo BDR 3



OPT Linear Fireplace



OPT Fireplace



OPT Open Hand Rail

## FIRST FLOOR

## SECOND FLOOR

Elevation A

Want to Know More  
About This Home?

CONTACT OUR COMMUNITY SALES MANAGER  
Call Us @ 470-248-2103