



PRICED AT
\$779,665

 2516 Sq Ft

 3 Beds

 3.5 Baths

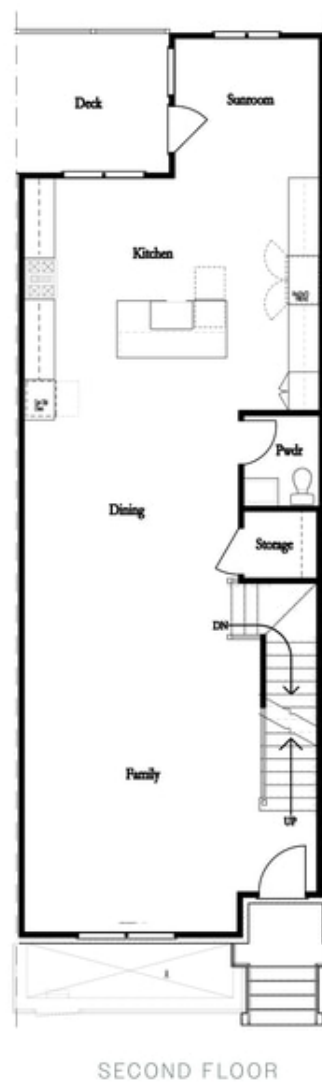
 2 Car Garage

 3.0 Story

Spring into a new home! \$15,000 to use ANY WAY YOU WANT using one of our 5-Preferred Lenders and close in May 2024. Welcome to Ward's Crossing by The Providence Group, located in the highly regarded Johns Creek community, known for its excellent schools, recreational amenities, shopping, dining, and vibrant cultural scene. The Sales Price Includes all Structural and Design options. Ward's Crossing is a Gated community with a pool and all exterior maintenance and insurance covered by your low HOA fees. The home is **UNDER CONSTRUCTION**, with an estimated move-in in Spring 2024. The Jacobsen II end unit offers 3 bedrooms and 3.5 bathrooms with a rear entry 2 car garage. The Front door on the main living level opens to your spacious Family and dining room with 10' ceilings. The Kitchen next to the Sunroom and Deck features 42" Custom Cabinetry, Quartz Countertops, and a GE stainless Steel appliance package. The first floor offers a guest retreat with an ensuite full bathroom with a walk-in shower. The primary bathroom has a dual vanity, soaking tub, and separate glass-enclosed shower. This is a rare opportunity for new construction townhomes. The photos are not of the exact property but are ...

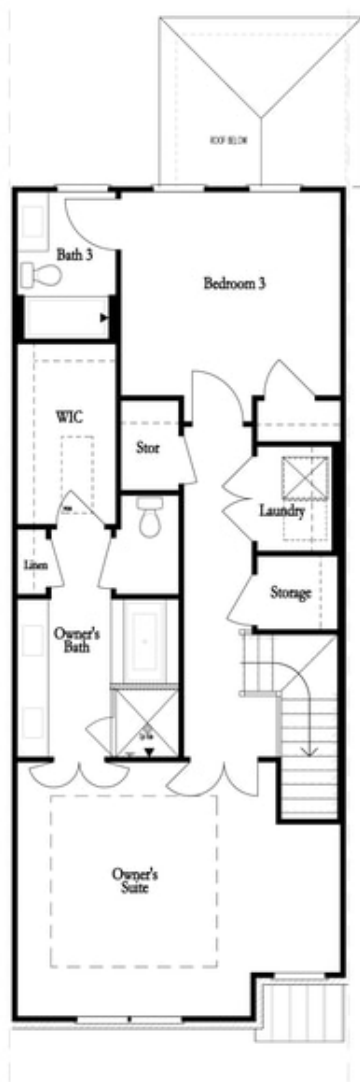
**Want to Know More
About This Home?**

CONTACT OUR COMMUNITY SALES MANAGER
Call Us @ 770.521.2151

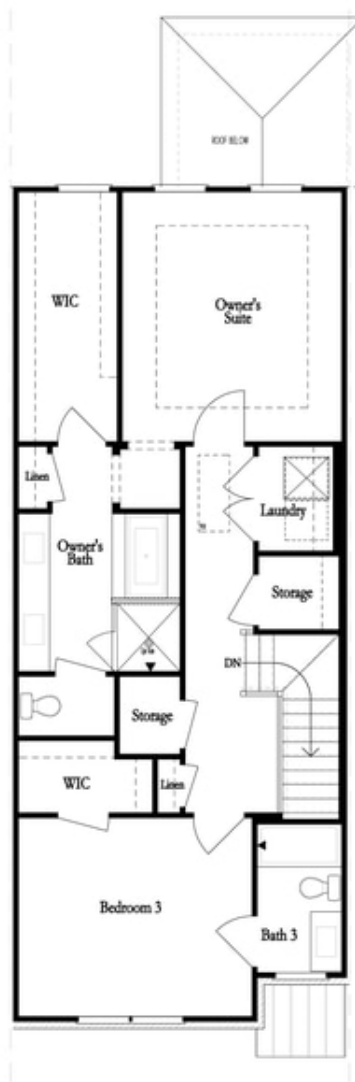


**Want to Know More
About This Home?**

CONTACT OUR COMMUNITY SALES MANAGER
Call Us @ 770.521.2151



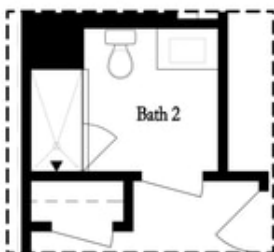
THIRD FLOOR
OWNER'S FRONT



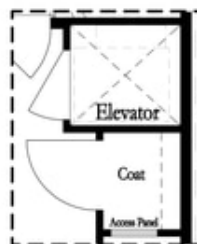
THIRD FLOOR
OWNER'S REAR

**Want to Know More
About This Home?**

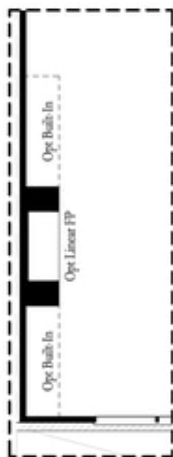
CONTACT OUR COMMUNITY SALES MANAGER
Call Us @ 770.521.2151



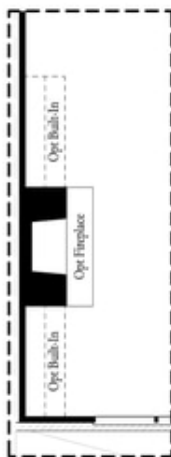
*Opt. Shower
on First Floor Bath*



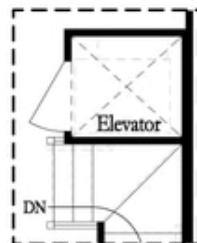
*Opt. Elevator
on First Floor*



Opt. Linear Fireplace



Opt. Fireplace

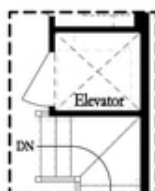


*Opt. Elevator
on Second Floor*

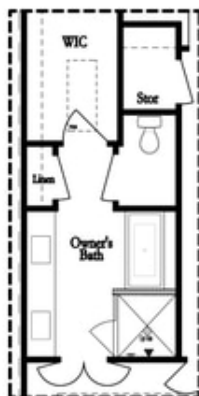
OPTIONS

**Want to Know More
About This Home?**

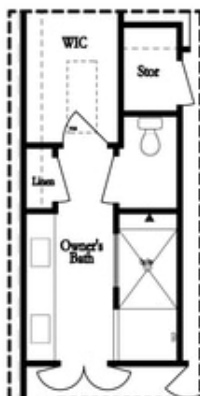
CONTACT OUR COMMUNITY SALES MANAGER
Call Us @ 770.521.2151



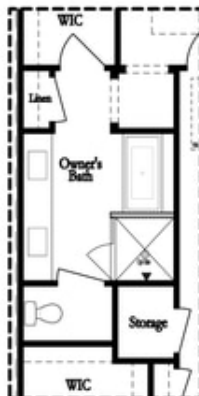
*Opt. Elevator
on Third Floor*



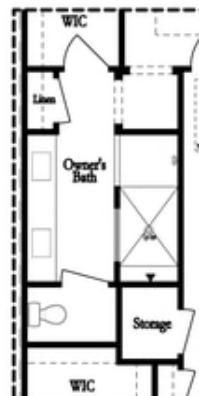
*Opt. Free Standing
Tub w/ Shower*



Opt. Walk-Through Shower



*Opt. Free Standing
Tub w/ Shower*



Opt. Walk-Through Shower

OWNER'S SUITE FRONT

OWNER'S SUITE REAR

OPTIONS

**Want to Know More
About This Home?**

CONTACT OUR COMMUNITY SALES MANAGER
Call Us @ 770.521.2151