



PRICED AT
\$639,400

 2520 Sq Ft

 3 Beds

 2.0 Baths

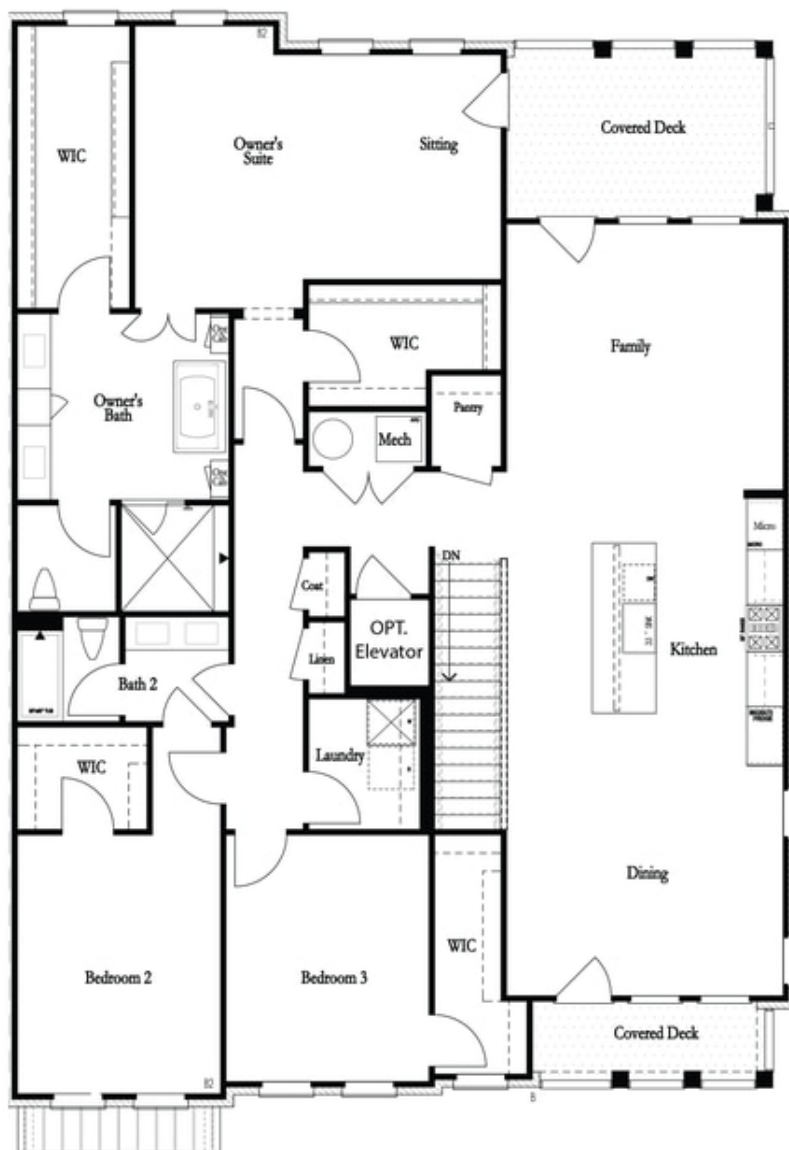
 1 Car Garage

 1.0 Story

Spring into a new home by The Providence Group and \$5,000 towards closing cost when financing with one of Seller's 5 preferred lenders. Waterside is a one of a kind community nestled around the Chattahoochee River. Our most popular Cochran plan is one you won't want to miss! You really have to see this home, it lives like a ranch home. Amazing open concept plan with views from the dining room all the way to the family room. Oversized Island, perfect for entertaining with stunning 10ft ceilings. Gorgeous features in this kitchen with stainless steel GE appliances, Quartz counter tops, and beautiful cabinets that feature soft close doors and drawers. The lovely owners suite hallmarks a sitting area and two walk-in-closets. The ensuite to this owners retreat has an oversized shower, dual vanity, and elegant soaking tub. Secondary bedrooms are roomy and both have oversized walk-in closets. No lack of storage in this wonderful home. Our spectacular clubhouse has a full kitchen, fitness center, banquet room, and covered decks overlooking the river. Other resort like amenities include, Green lawn spaces with fire pit area overlooking the river, walking trails by the river, pickleball courts, and an amazing pool. Our manned ...

**Want to Know More
About This Home?**

CONTACT OUR COMMUNITY SALES MANAGER
Call Us @ (470) 514-6999



Cassidy (end unit)
Upper Level

**Want to Know More
About This Home?**

CONTACT OUR COMMUNITY SALES MANAGER
Call Us @ (470) 514-6999



**Want to Know More
About This Home?**

CONTACT OUR COMMUNITY SALES MANAGER
Call Us @ (470) 514-6999



Opt. Fireplace



Opt. Laundry Room
with Sink

**Want to Know More
About This Home?**

CONTACT OUR COMMUNITY SALES MANAGER
Call Us @ (470) 514-6999