



PRICED AT  
**\$701,955**

 2201 Sq Ft

 3 Beds

 2.5 Baths

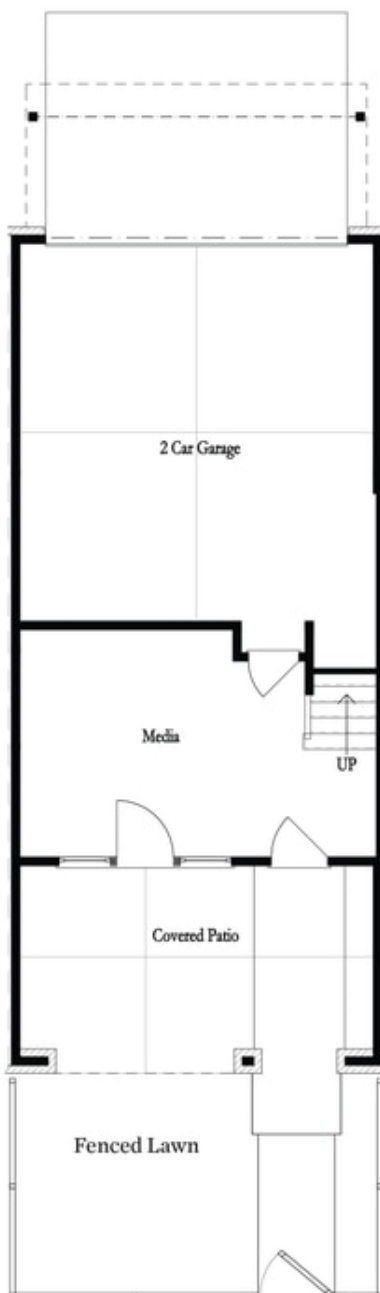
 2 Car Garage

 3.0 Story

Quick Move-in!! Spring into a New home by The Providence Group! \$10,000 towards closing cost when financing with one of Seller's preferred lenders. Welcome to Waterside a Gated Master planned community nestled on the Chattahoochee River! Amazing Benton I floorplan that has spectacular upgrades throughout. When you enter this beautiful home where you find a Media room that you could use for whatever suits your lifestyle. Lovely covered patio that overlooks gorgeous fenced in yard!! You will find designer finishes in the gourmet kitchen with stunning Cambria countertops, stainless appliances, tile backsplash and large island for casual dining! Moreover, designer finishes in this kitchen contribute to a luxurious and functional environment that reflects unapparelled style. Around the corner from the kitchen is a sunroom that could a perfect home office space, natural light beams into this space! Just off this room is access to a private deck. From the kitchen, you have a open view of dining and family room perfect for hosting events with family and friends. The upper level boasts your spacious owners suite with large walk in closet. The luxurious owners bath has a dual vanity and oversized tiled shower and a lovely soaking tub. Two roomy ...

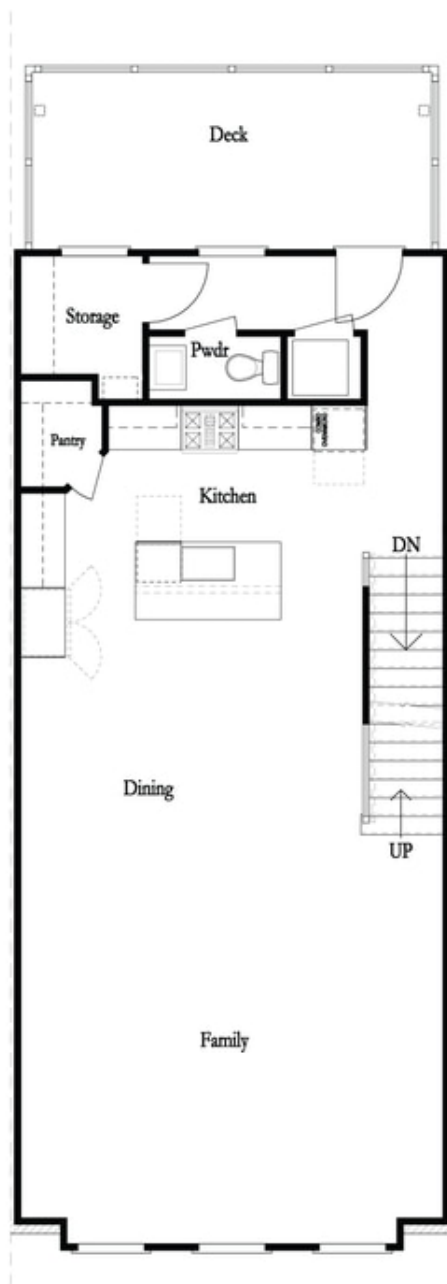
**Want to Know More  
About This Home?**

CONTACT OUR COMMUNITY SALES MANAGER  
Call Us @ (470) 514-6999



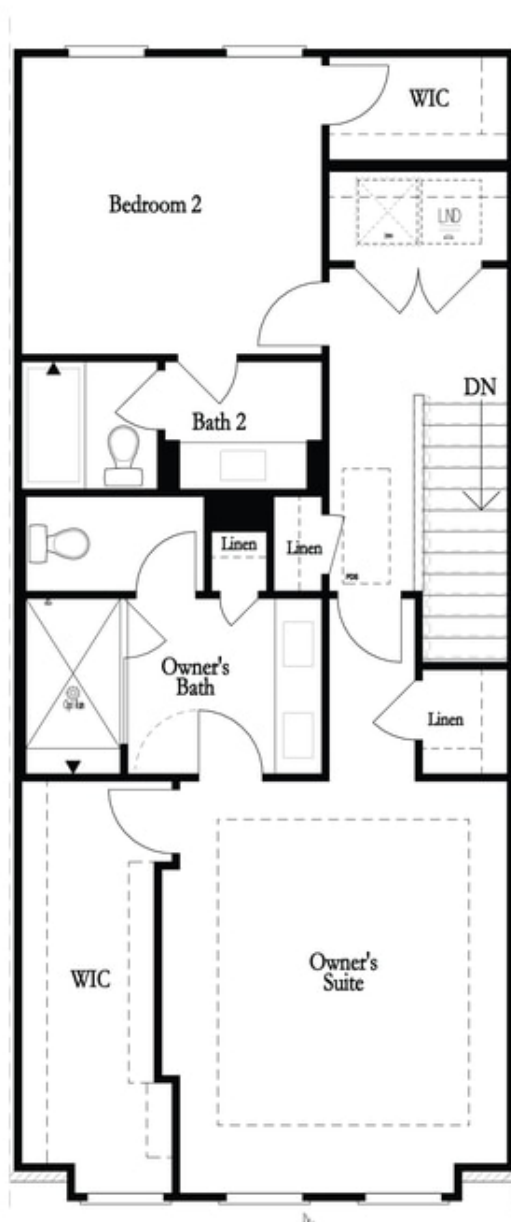
**Want to Know More  
About This Home?**

CONTACT OUR COMMUNITY SALES MANAGER  
Call Us @ (470) 514-6999



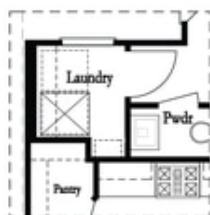
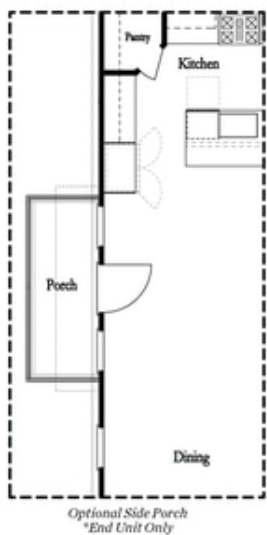
**Want to Know More  
About This Home?**

CONTACT OUR COMMUNITY SALES MANAGER  
Call Us @ (470) 514-6999

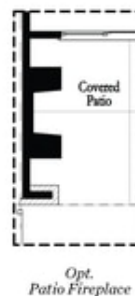
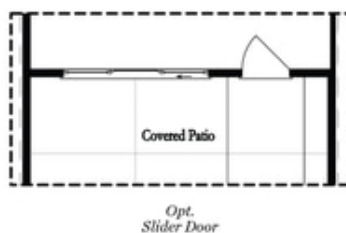
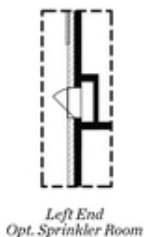


**Want to Know More  
About This Home?**

CONTACT OUR COMMUNITY SALES MANAGER  
Call Us @ (470) 514-6999



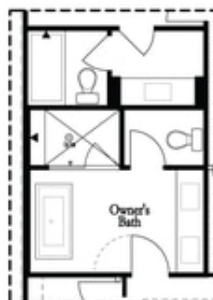
#### Main Level Options



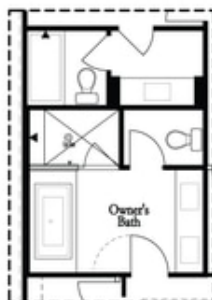
#### Terrace Level Options

Want to Know More  
About This Home?

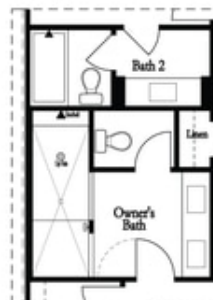
CONTACT OUR COMMUNITY SALES MANAGER  
Call Us @ (470) 514-6999



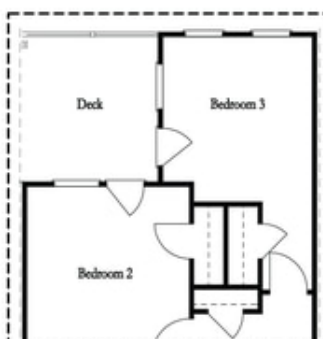
*Opt. Freestanding  
Tub/Shower Combo*



*Opt. Decked  
Tub/Shower Combo*



*Opt. Walk-Through Shower*



*Opt. Bedroom 3  
\*Only Available with Sunroom option  
\*Laundry Moved to Main Level w/ this Opt.*

#### Upper Level Options

**Want to Know More  
About This Home?**

CONTACT OUR COMMUNITY SALES MANAGER  
Call Us @ (470) 514-6999