



PRICED AT
\$572,600

 1694 Sq Ft

 2 Beds

 2.5 Baths

 1 Car Garage

 3.0 Story

SPRING INTO A NEW HOME Barnesley I unit features 2 bedrooms and 2.5 baths with our Award Winning Warm Slate Collection, Maple Slate Cabinets, Calacatta Prado Quartz Countertops, 2 Kitchen Islands, Stainless Steel GE elevated appliances, Vent Hood, Gas Cooktop, Electrical Oven, Dishwasher & built in Microwave. Open Concept Living Room with access to private deck, Insulated windows let the natural light flood in. Front Entry features Sliding Glass Door and a regular glass door leading into the Office / Media/ Flex Room ideally for entrainment. The sliding Glass Door leads to a cover patio with front private fenced yard. On the main floor, you will be invited in the Open Space Concept Kitchen, Dining and Living Room. A powder room is tucked away behind the kitchen for your guests convenience. Upstairs you will find 2 Bedrooms and 2 full Baths. The Master Bedroom has Tray Ceilings and a cozy Bathroom with a Frameless Shower, Dual Vanity and much more. Carpet is standard in all the bedrooms, the rest of this unit has Hard Surface. One car garage with extra parking in the driveway and numerous parking pockets throughout the community. Plenty of green walkable spaces around the community. ...

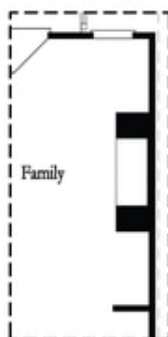
**Want to Know More
About This Home?**

CONTACT OUR COMMUNITY SALES MANAGER
Call Us @ (678) 591-1930



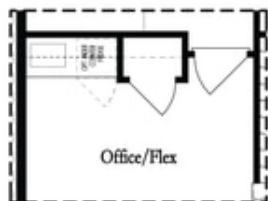
Want to Know More
About This Home?

CONTACT OUR COMMUNITY SALES MANAGER
Call Us @ (678) 591-1930

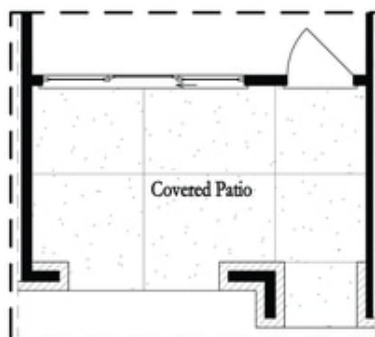


Opt. Linear Fireplace

Second Floor Options



Opt. Wet Bar



Opt. Slider Door

First Floor Options

**Want to Know More
About This Home?**

CONTACT OUR COMMUNITY SALES MANAGER
Call Us @ (678) 591-1930