



PRICED FROM
\$684,200

 1,955 - 2,201 Sq Ft

 2 - 3 Beds

 2.5 Baths

 2 Car Garage

 3.0 Story

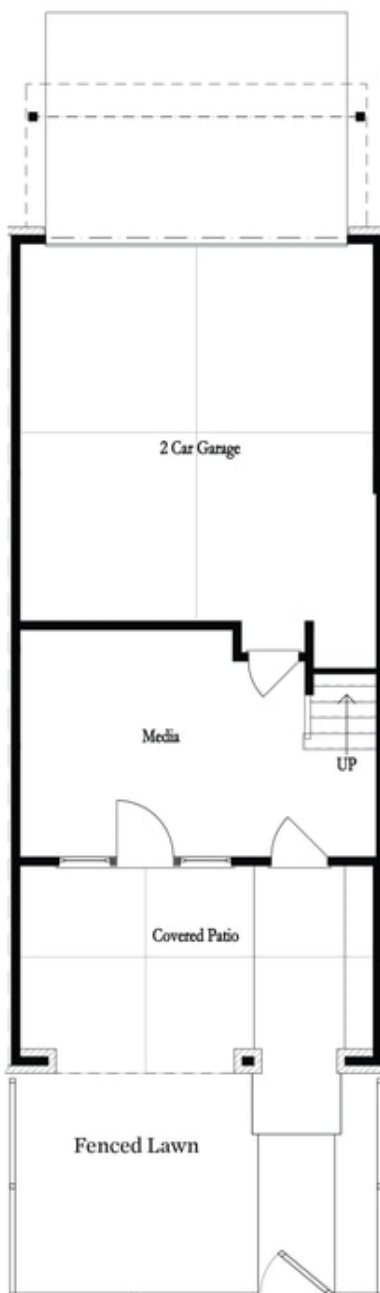
- Gourmet Kitchen with Island
- Owner's Suite and Private Bath with Dual Vanities and Large Walk-In Shower
- Media room on Terrace Level
- Covered Porch
- Two Car Garage

[Read More Online](#)

Available Elevations

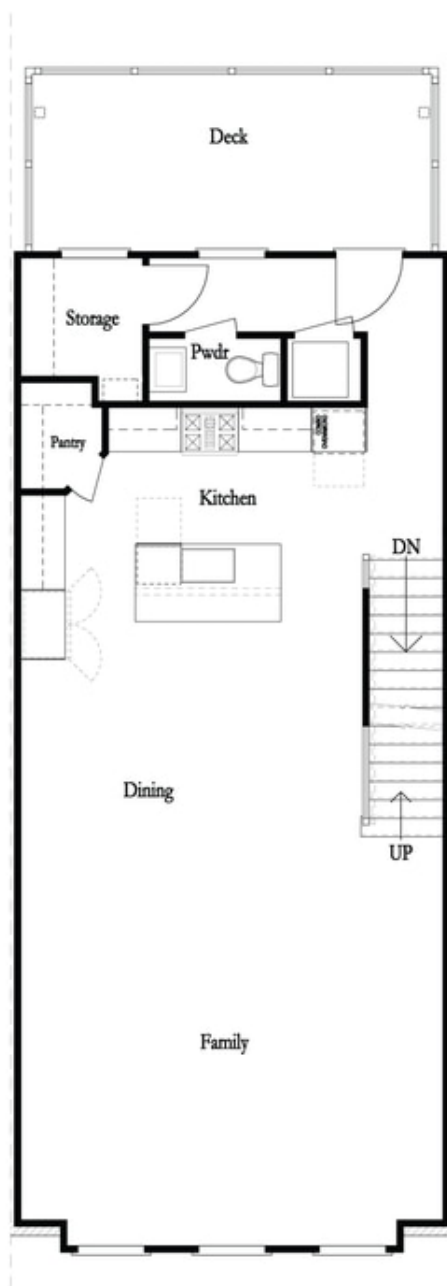


Benton I and Barnsley I - Elevation



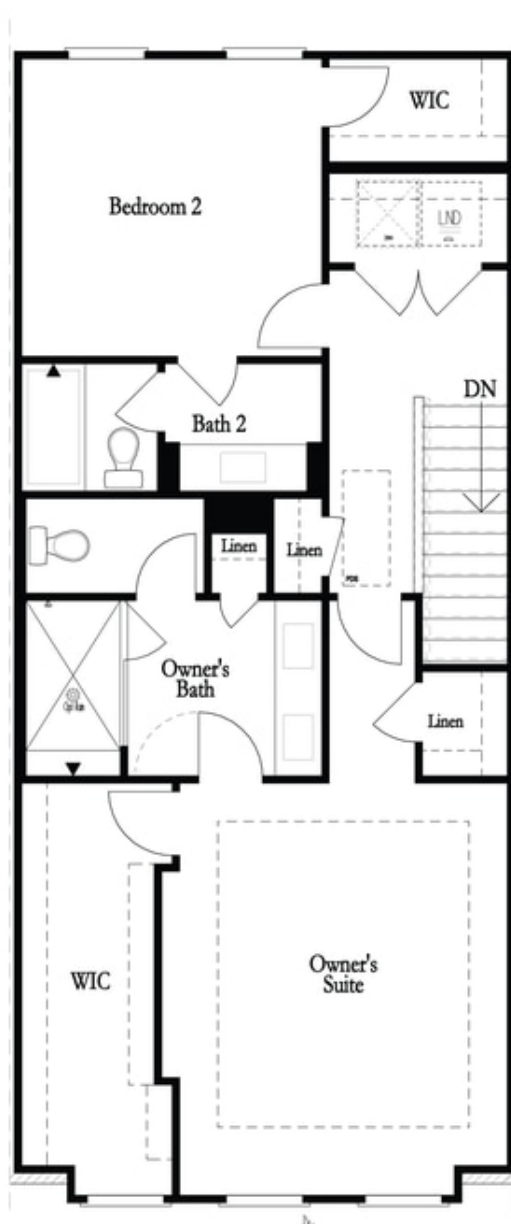
**Want to Know More
About This Home?**

CONTACT OUR COMMUNITY SALES MANAGER
Call Us @ (678) 591-1930



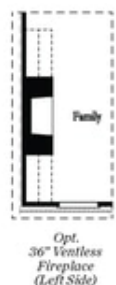
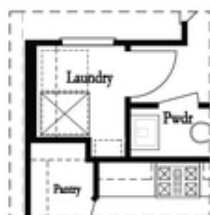
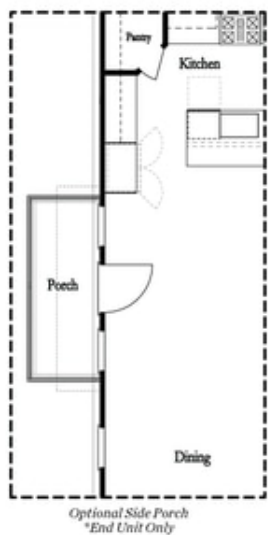
**Want to Know More
About This Home?**

CONTACT OUR COMMUNITY SALES MANAGER
Call Us @ (678) 591-1930

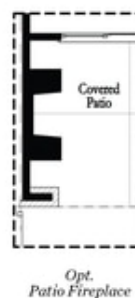
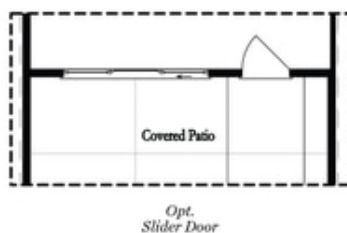
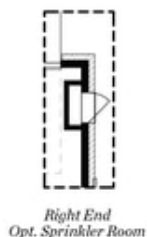
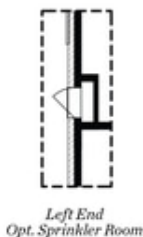


Want to Know More
About This Home?

CONTACT OUR COMMUNITY SALES MANAGER
Call Us @ (678) 591-1930



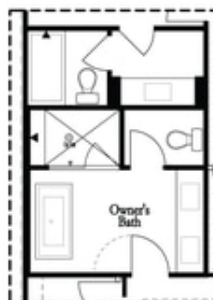
Main Level Options



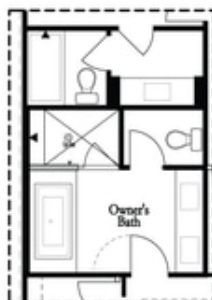
Terrace Level Options

Want to Know More
About This Home?

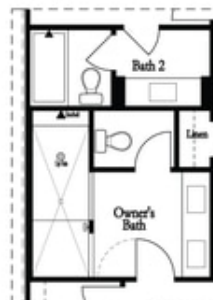
CONTACT OUR COMMUNITY SALES MANAGER
Call Us @ (678) 591-1930



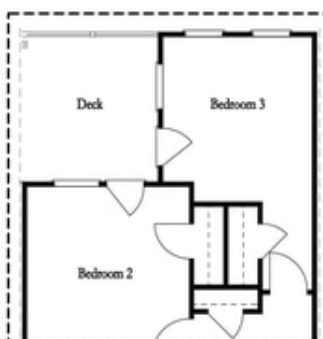
*Opt. Freestanding
Tub/Shower Combo*



*Opt. Decked
Tub/Shower Combo*



Opt. Walk-Through Shower



*Opt. Bedroom 3
*Only Available with Sunroom option
Laundry Moved to Main Level w/ this Opt.

Upper Level Options

**Want to Know More
About This Home?**

CONTACT OUR COMMUNITY SALES MANAGER
Call Us @ (678) 591-1930