



PRICED FROM  
**\$706,500**

 2,163 - 2,395 Sq Ft

 3 Beds

 3.5 Baths

 2 Car Garage

 3.0 Story

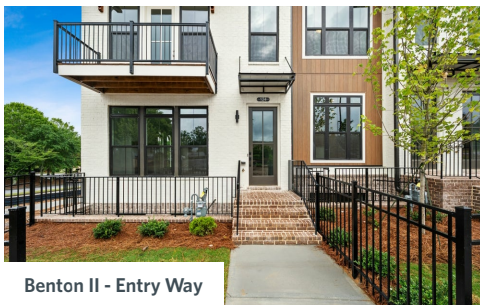
- Gourmet Kitchen with Island
- Owner's Suite and Private Bath with Dual Vanities and Large Walk-In Shower
- Bedroom with Private Bath on Terrace Level
- Two Car Garage

[Read More Online](#)

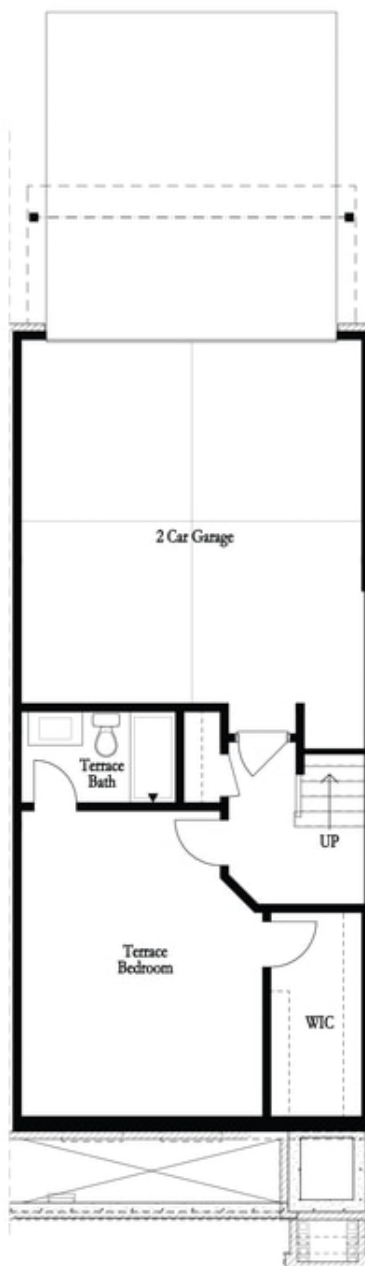
## Available Elevations



Benton II and Barnsley II - Elevation

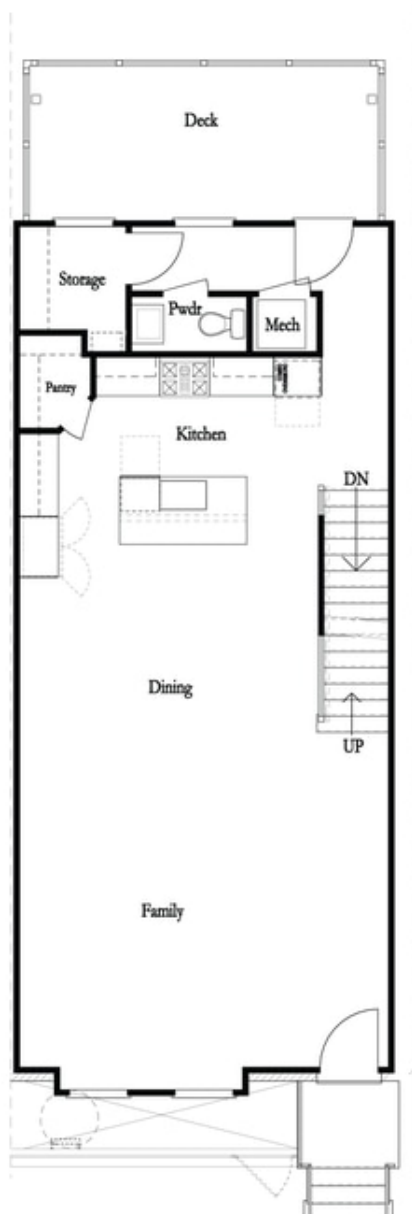
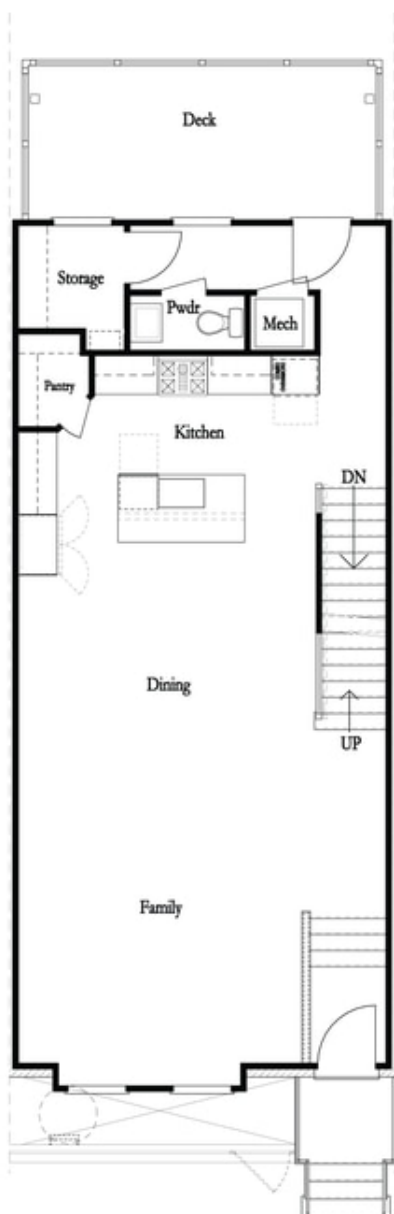


Benton II - Entry Way



Want to Know More  
About This Home?

CONTACT OUR COMMUNITY SALES MANAGER  
Call Us @ (678) 591-1930



Want to Know More  
About This Home?

CONTACT OUR COMMUNITY SALES MANAGER  
Call Us @ (678) 591-1930



Want to Know More  
About This Home?

CONTACT OUR COMMUNITY SALES MANAGER  
Call Us @ (678) 591-1930

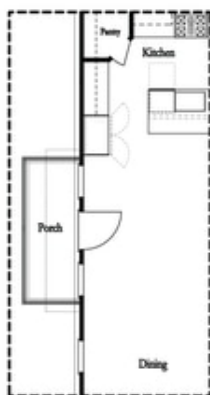


*Left End  
Opt. Sprinkler Room*



*Right End  
Opt. Sprinkler Room*

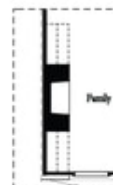
#### Terrace Level Options



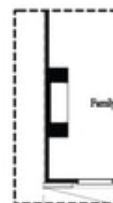
*Optional Side Porch  
\*End Unit Only*



*Opt. Sunroom*



*Opt. 36" Fireplace*



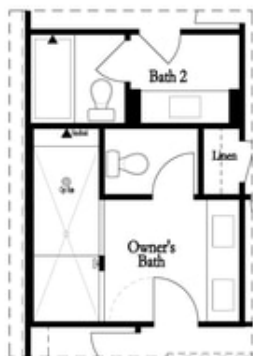
*Opt. Linear Fireplace*

#### Main Level Options

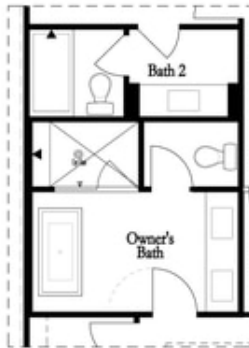
**Want to Know More  
About This Home?**

CONTACT OUR COMMUNITY SALES MANAGER  
Call Us @ (678) 591-1930

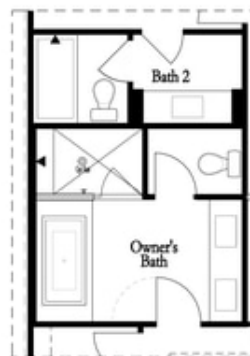
### Options



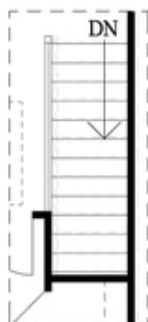
*Opt. Walk-Through  
Shower*



*Opt. Freestanding  
Tub/Shower Combo*



*Opt. Decked  
Tub/Shower Combo*



*Opt. Open Rail*

### Third Floor Options

**Want to Know More  
About This Home?**

CONTACT OUR COMMUNITY SALES MANAGER  
Call Us @ (678) 591-1930