



PRICED AT  
**\$672,335**

 2205 Sq Ft

 3 Beds

 2.5 Baths

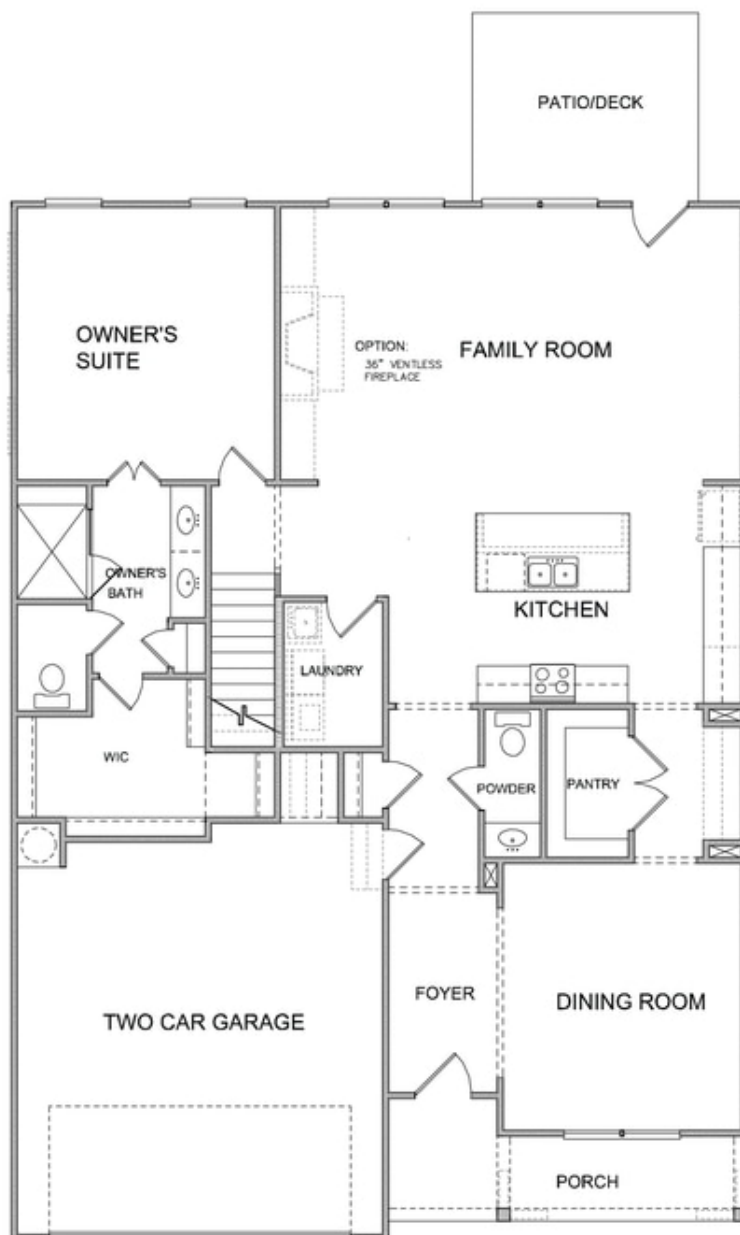
 2 Car Garage

 2.0 Story

Spring into a New Home! The UNFINISHED BASEMENT space of this farmhouse-style home presents a canvas of possibilities, awaiting the vision and creativity of its future owner. The Morgan on homesite 92 is nestled on a tranquil wooded lot evoking a sense of rustic charm and modern comfort. Upon entering, you step into a welcoming foyer that seamlessly transitions into an open concept floorplan. The kitchen boasts custom cabinetry, quartz countertops and high-end stainless steel appliances. An oversized island overlooks the family room and provides the perfect spot for casual dining. The family room features a cozy fireplace as its focal point and the 10' ceilings offers a spacious and airy ambiance. Easy access from the family room to a covered porch that offers a versatile space for relaxation, entertainment and enjoying the outdoors in comfort. A separate dining room is connected to the kitchen via a convenient walk-through butler's pantry, blending traditional sophistication with modern convenience. The owners suite, conveniently located on the main level, offers a peaceful retreat after a long day. With its spacious layout and luxurious amenities providing the ultimate in relaxation and comfort. Adjacent to the sleeping area is the en-suite bathroom, featuring a spacious ...

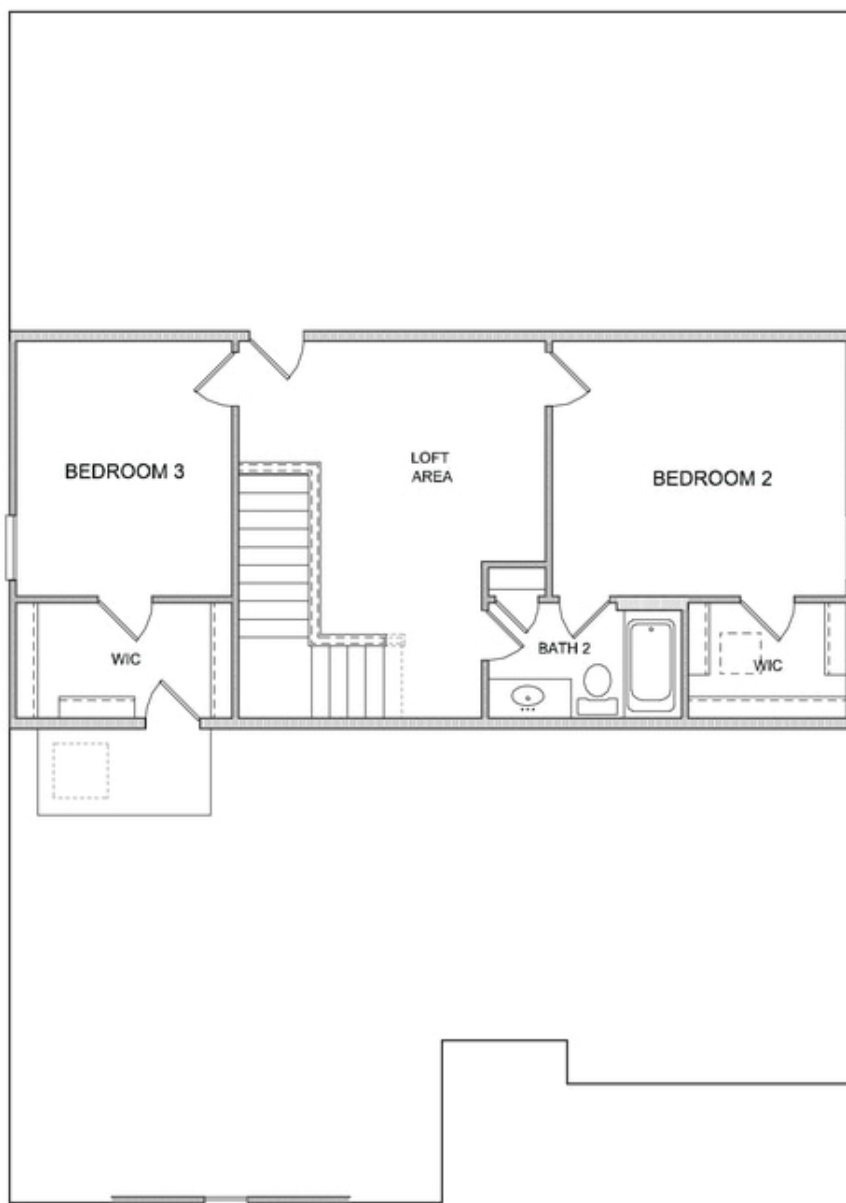
**Want to Know More  
About This Home?**

CONTACT OUR COMMUNITY SALES MANAGER  
Call Us @ (470) 509-9931



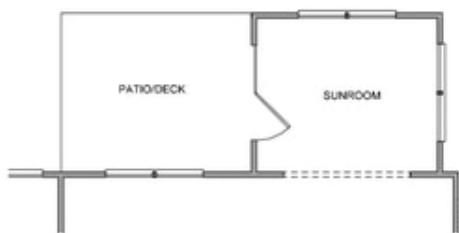
**Want to Know More  
About This Home?**

CONTACT OUR COMMUNITY SALES MANAGER  
Call Us @ (470) 509-9931

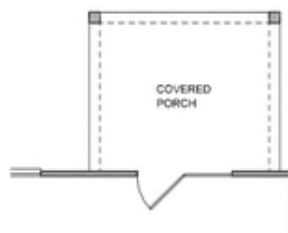


**Want to Know More  
About This Home?**

CONTACT OUR COMMUNITY SALES MANAGER  
Call Us @ (470) 509-9931



Opt. Sunroom



Opt. Covered Porch



Opt. Sitting Room

Want to Know More  
About This Home?

CONTACT OUR COMMUNITY SALES MANAGER  
Call Us @ (470) 509-9931