



PRICED AT
\$679,950

 2205 Sq Ft

 3 Beds

 2.5 Baths

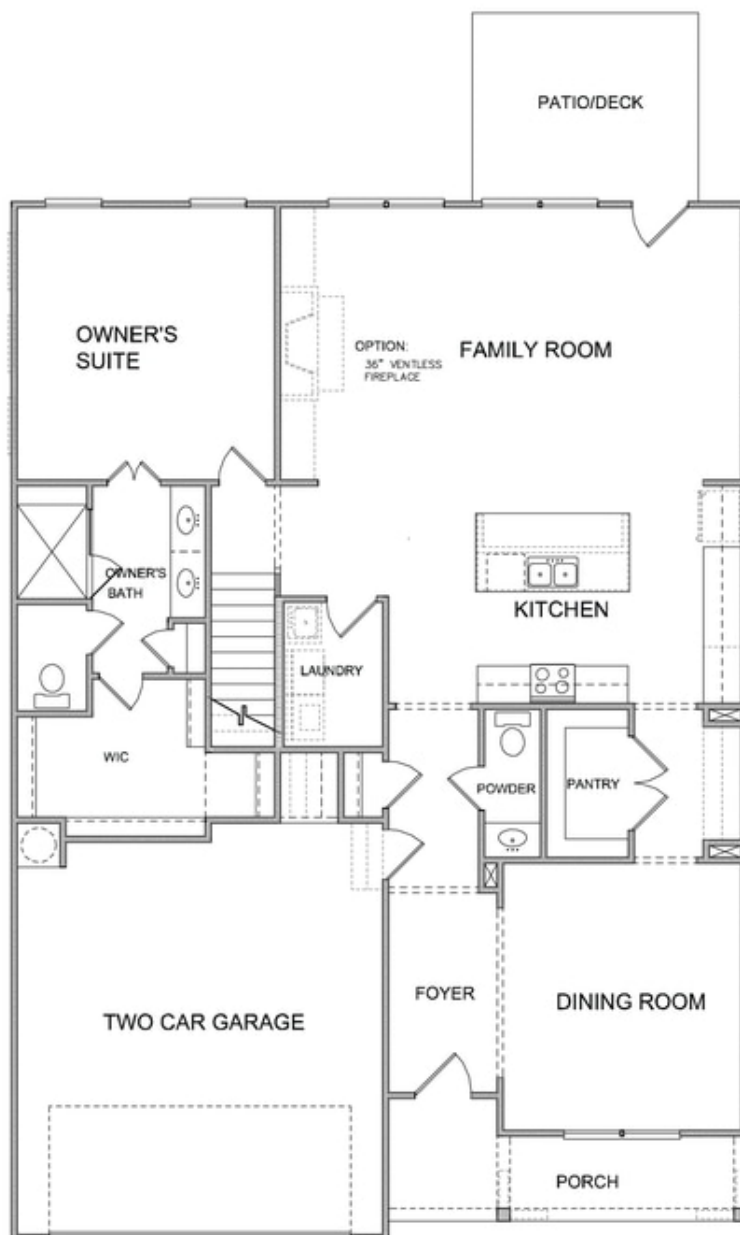
 2 Car Garage

 2.0 Story

Spring into a New Home! UNFINISHED BASEMENT HOME. This open plan has tons of natural light! The Morgan features a separate dining room with a pass through butlers pantry and HUGE walk in pantry. The kitchen island is oversized and opens to the family room. A dramatic fireplace sets the tone for a cozy setting. The wooded private homesite will feature a twelve foot sliding glass door that will open to a twenty foot COVERED deck. This feature will enhance the outside living experience. OWNERS SUITE ON MAIN with beautiful en-suite featuring a double vanity and large walk-in tile shower. There are two large secondary bedrooms on the second floor with a loft and tons of attic storage. All the closets are walk in and the bathroom is accessible to the larger bedroom. The basement will mirror the first floor offering tons of storage or perfect for future finishing. We will be finishing this home in Oct/Nov time frame. This allows you to visit our design studio and personalize this amazing home. Perfect for the Holidays!! Elevate your Life in 2024 with \$5,000 towards closing costs with one of our 5 preferred lenders. Photos of previously built Morgan floorplan [The ...

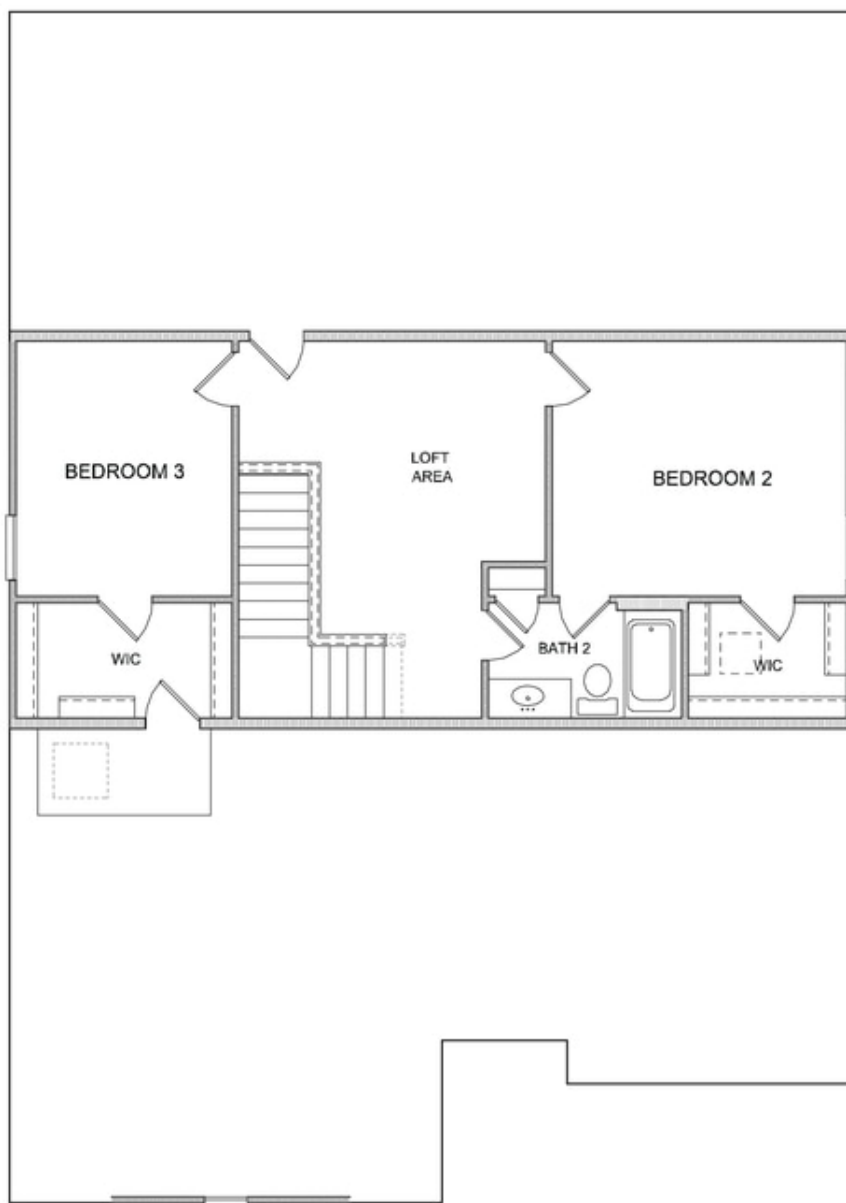
**Want to Know More
About This Home?**

CONTACT OUR COMMUNITY SALES MANAGER
Call Us @ (470) 509-9931



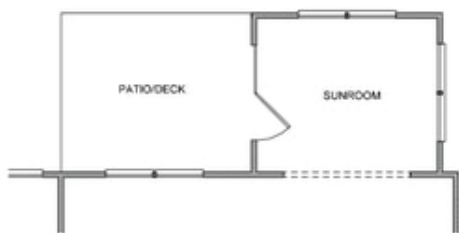
**Want to Know More
About This Home?**

CONTACT OUR COMMUNITY SALES MANAGER
Call Us @ (470) 509-9931

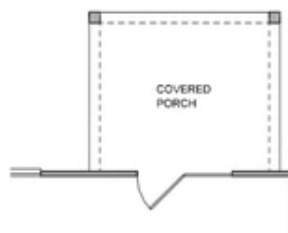


**Want to Know More
About This Home?**

CONTACT OUR COMMUNITY SALES MANAGER
Call Us @ (470) 509-9931



Opt. Sunroom



Opt. Covered Porch



Opt. Sitting Room

**Want to Know More
About This Home?**

CONTACT OUR COMMUNITY SALES MANAGER
Call Us @ (470) 509-9931