



PRICED AT
\$1,133,125

 4230 Sq Ft

 6 Beds

 5.0 Baths

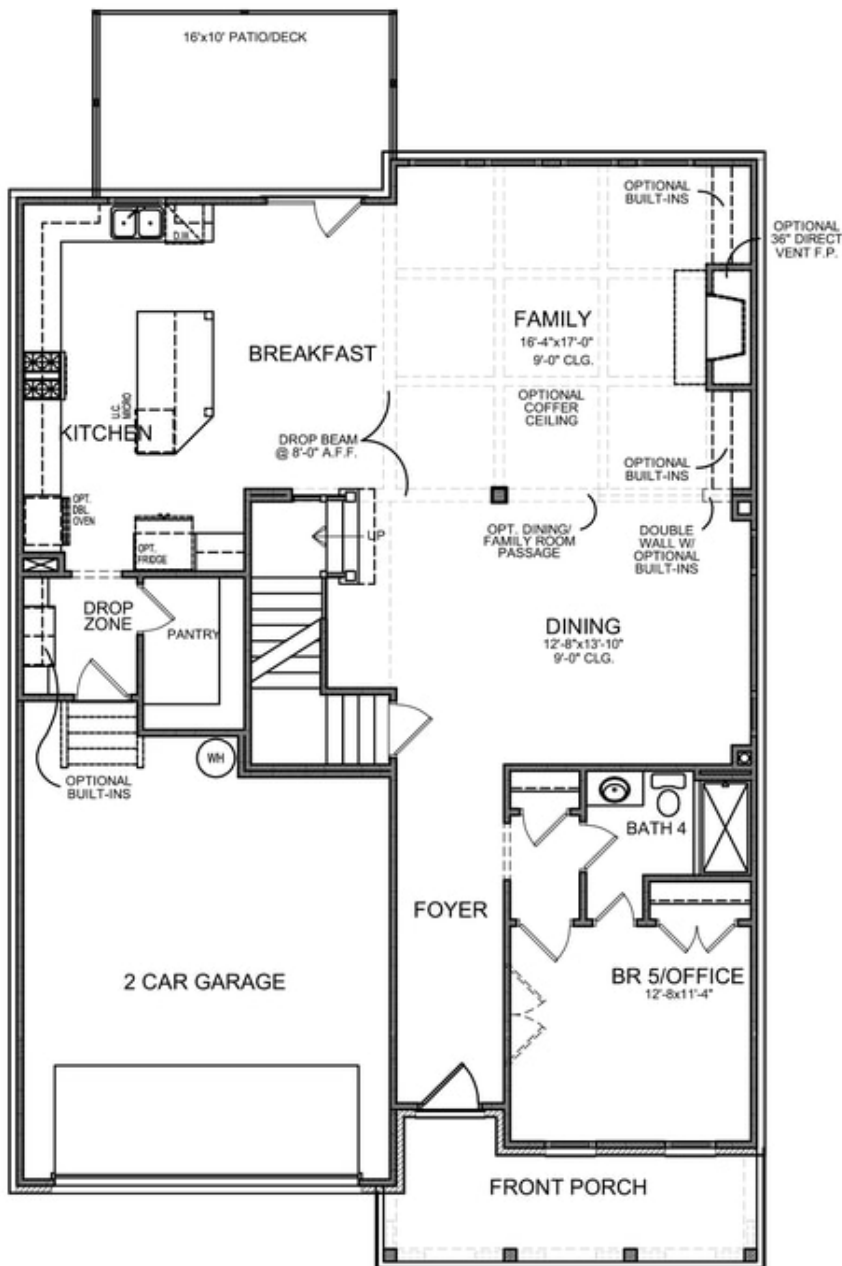
 2 Car Garage

 3.0 Story

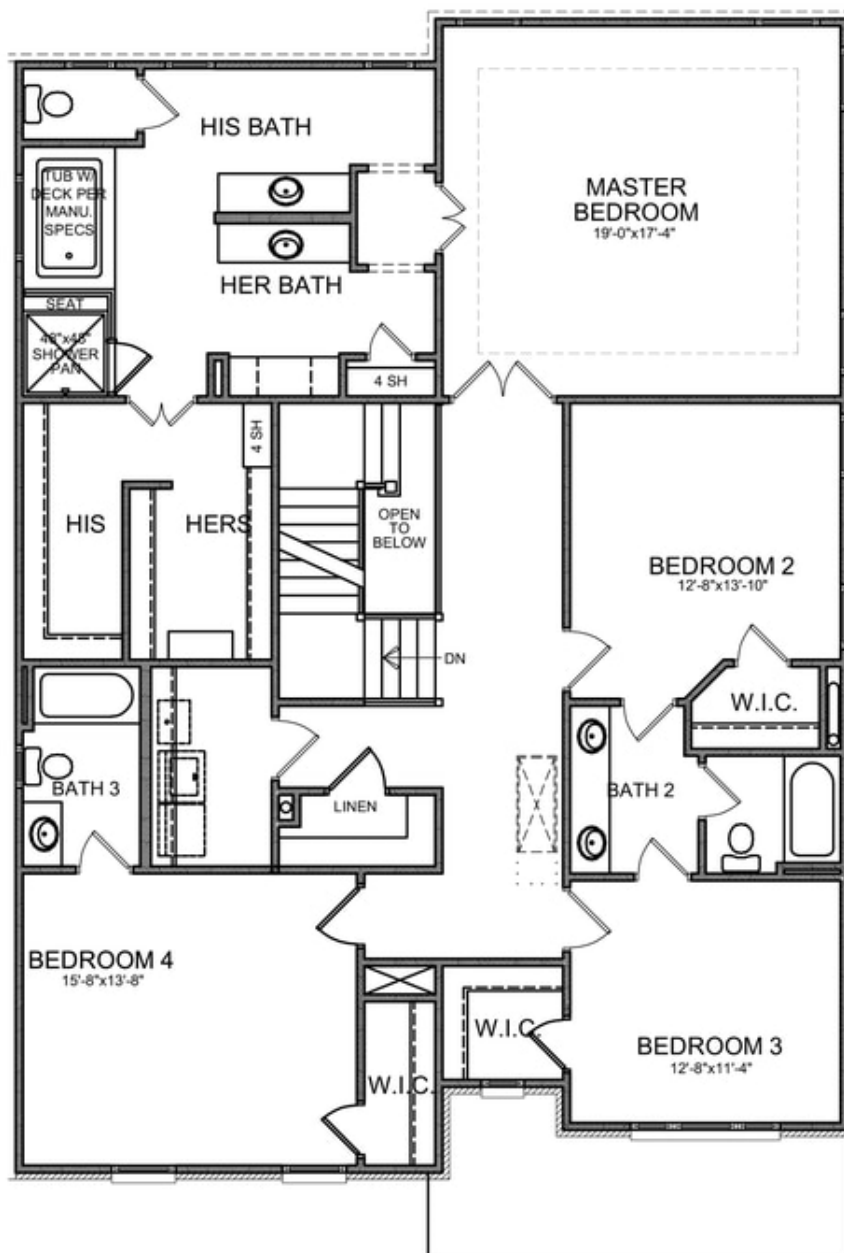
The Montgomery D - "SPRING INTO A NEW HOME ?" TO BE BUILT HOME MONTGOMERY IS THE MOST REQUESTED HOME DESIGN!! This stunning THREE STORY HOME story home is on a nice wooded lot in an award-winning neighborhood. From the open-concept kitchen and living space to there is plenty of room for the whole family to enjoy. This Owners Retreat is your own personal Haven with an Incredible Spa like Retreat with Incredible Separate Vanity Spaces, separate soaking tub and great shower with bench seat, fantastic walk in Closet! Come see why EVERYONE LOVES THIS HOME. Structural options included 10' ceilings on the main level, extended kitchen and the awesome 3rd floor. Located in an Award winning school district! Bellmore Park offers HOA maintained lawns, onsite fitness center, 6 tennis court, basketball court, pools, playground, clubhouse, splash pad, event lawns and a 24 HOUR MANNED GATEHOUSE. Convenient to shopping and entertainment Photos are not of actual home but of same home previously built in the community.

**Want to Know More
About This Home?**

CONTACT OUR COMMUNITY SALES MANAGER
Call Us @ (770) 580-9300

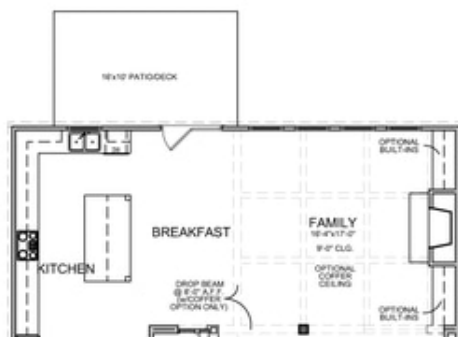


CONTACT OUR COMMUNITY SALES MANAGER
Call Us @ (770) 580-9300



**Want to Know More
About This Home?**

CONTACT OUR COMMUNITY SALES MANAGER
Call Us @ (770) 580-9300



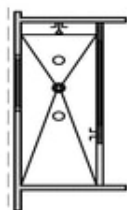
OPT Extended Kitchen



OPT Extended Porch & Awning



OPT Covered Porch



OPT Owner's Walk-In Shower

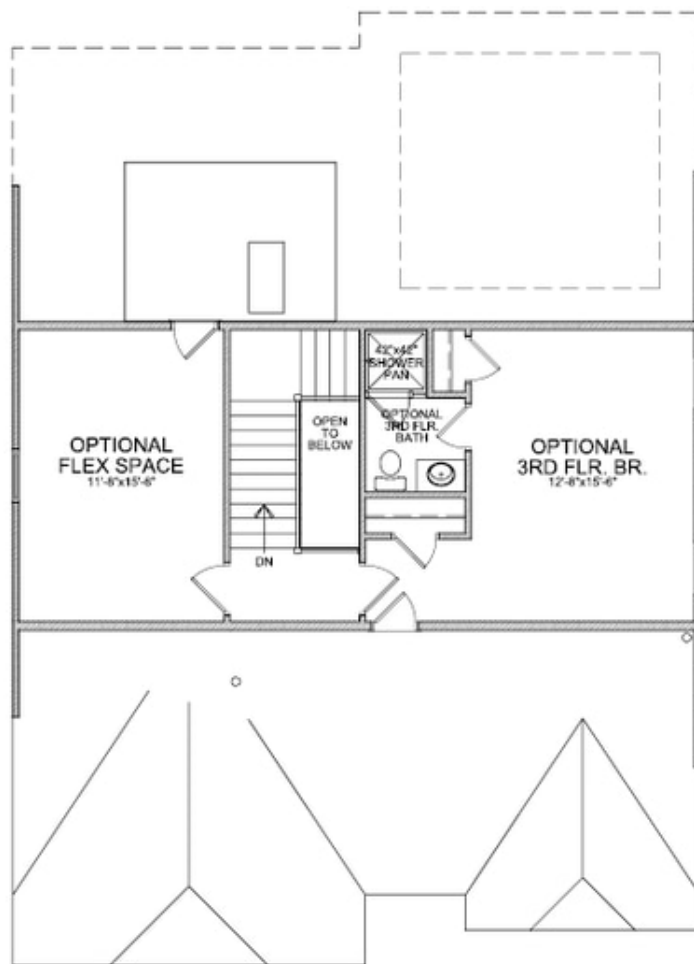


OPT Sunroom -&- OPT Patio/Deck

OPT Fireplace on Sunroom

Want to Know More
About This Home?

CONTACT OUR COMMUNITY SALES MANAGER
Call Us @ (770) 580-9300



OPT Third Floor

*Third Floor NOT available on Elevations B & E

**Want to Know More
About This Home?**

CONTACT OUR COMMUNITY SALES MANAGER
Call Us @ (770) 580-9300