



PRICED FROM
\$949,400

 3,059 Sq Ft

 3 - 4 Beds

 2 - 3.5 Baths

 2 Car Garage

 2.0 Story

- Spacious Main Level Layout with Gourmet Kitchen with Island Overlooking Family Room and Breakfast Room
- Formal Dining Room Open to Family Room and Kitchen
- Upper Level Retreat Ideal for Media Room or Secondary Family Room
- Large Owner's Bath With Private Vanities, Separate Soaking Tub and Shower
- Secondary Bedrooms Offer Shared Full Bath With Private Vanities

[Read More Online](#)

Available Elevations



Elevation A



Elevation B

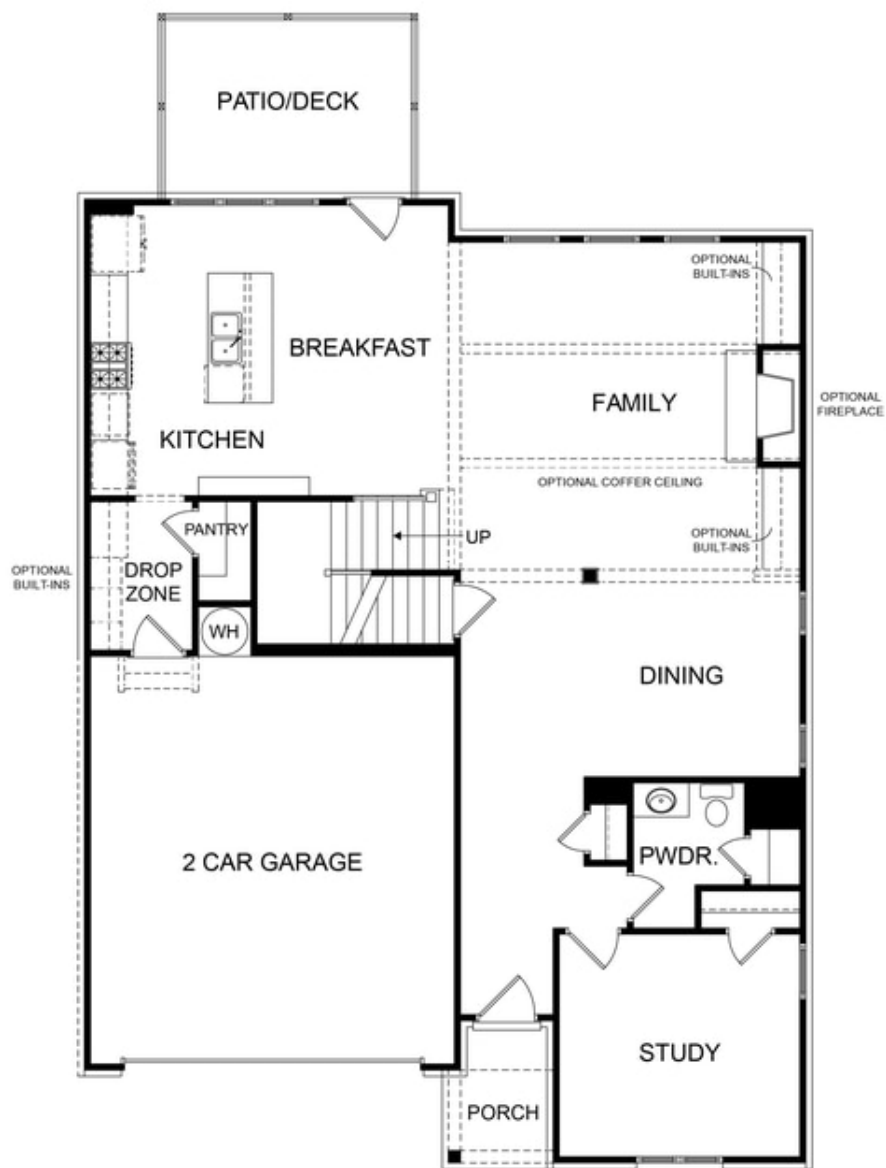


Elevation C



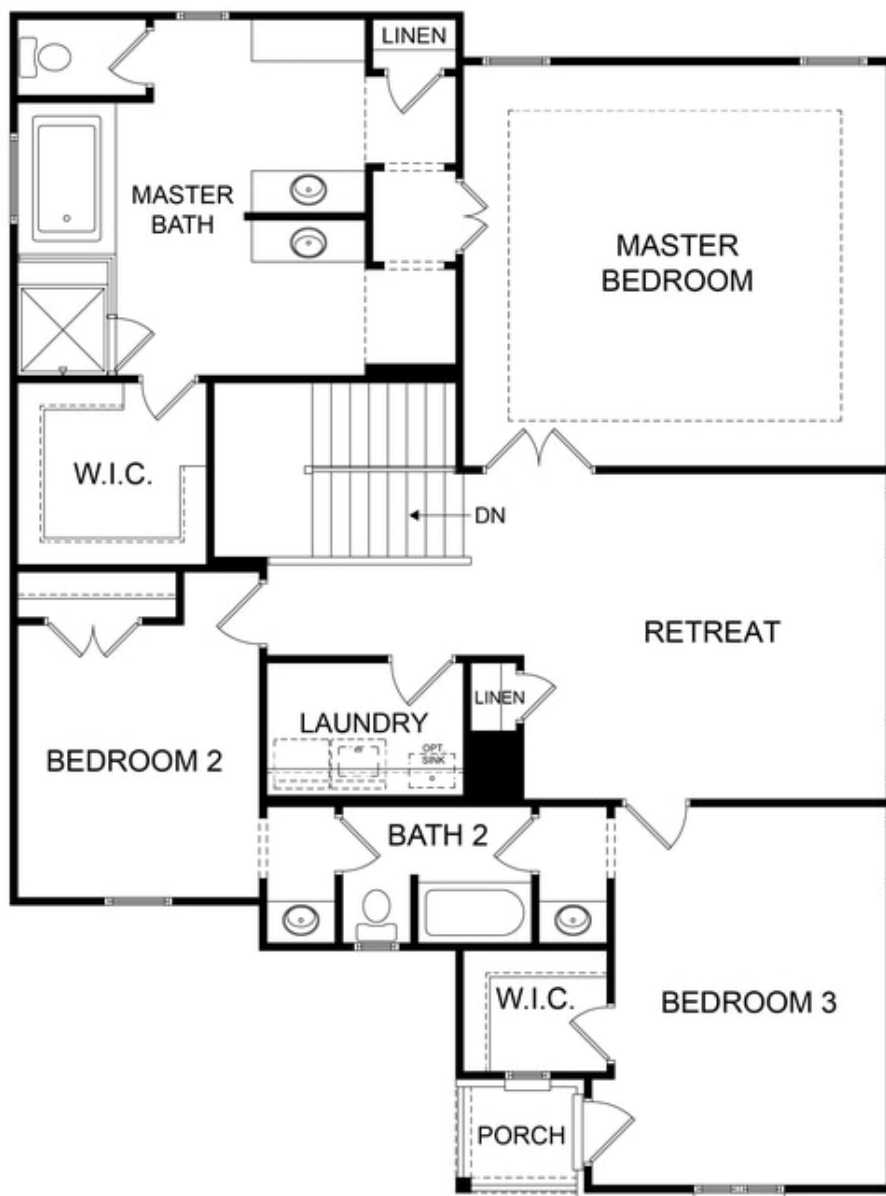
Elevation D

Please refer to actual blueprints for an accurate representation of home design. Home design and elevations subject to change without prior notice. Window, door and porch locations may vary by elevation. Subject to error, omission or withdrawal.



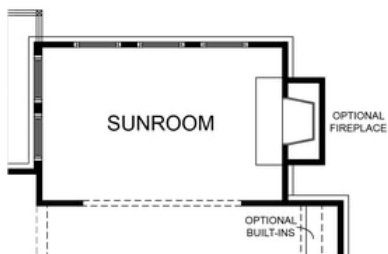
**Want to Know More
About This Home?**

CONTACT OUR COMMUNITY SALES MANAGER
Call Us @ (770) 580-9300



**Want to Know More
About This Home?**

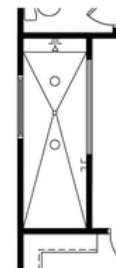
CONTACT OUR COMMUNITY SALES MANAGER
Call Us @ (770) 580-9300



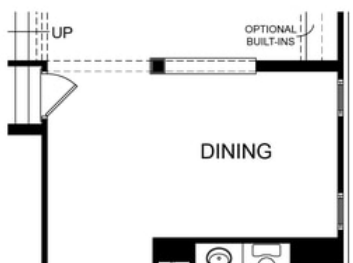
OPT. SUNROOM



OPT. SITTING ROOM



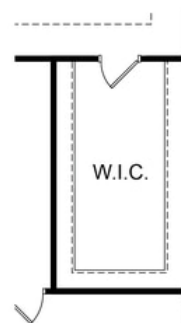
OPT. WALK-IN SHOWER



OPT. DIVISION WALL FOR DINING



OPT. BEDROOM WITH BATH ILO STUDY



OPT. ADDITIONAL
WALK-IN CLOSET

Want to Know More
About This Home?

CONTACT OUR COMMUNITY SALES MANAGER
Call Us @ (770) 580-9300