



PRICED FROM  
**\$1,020,400**

 3,472 - 4,192 Sq Ft

 5 - 6 Beds

 4 - 5 Baths

 2 Car Garage

 3.0 Story

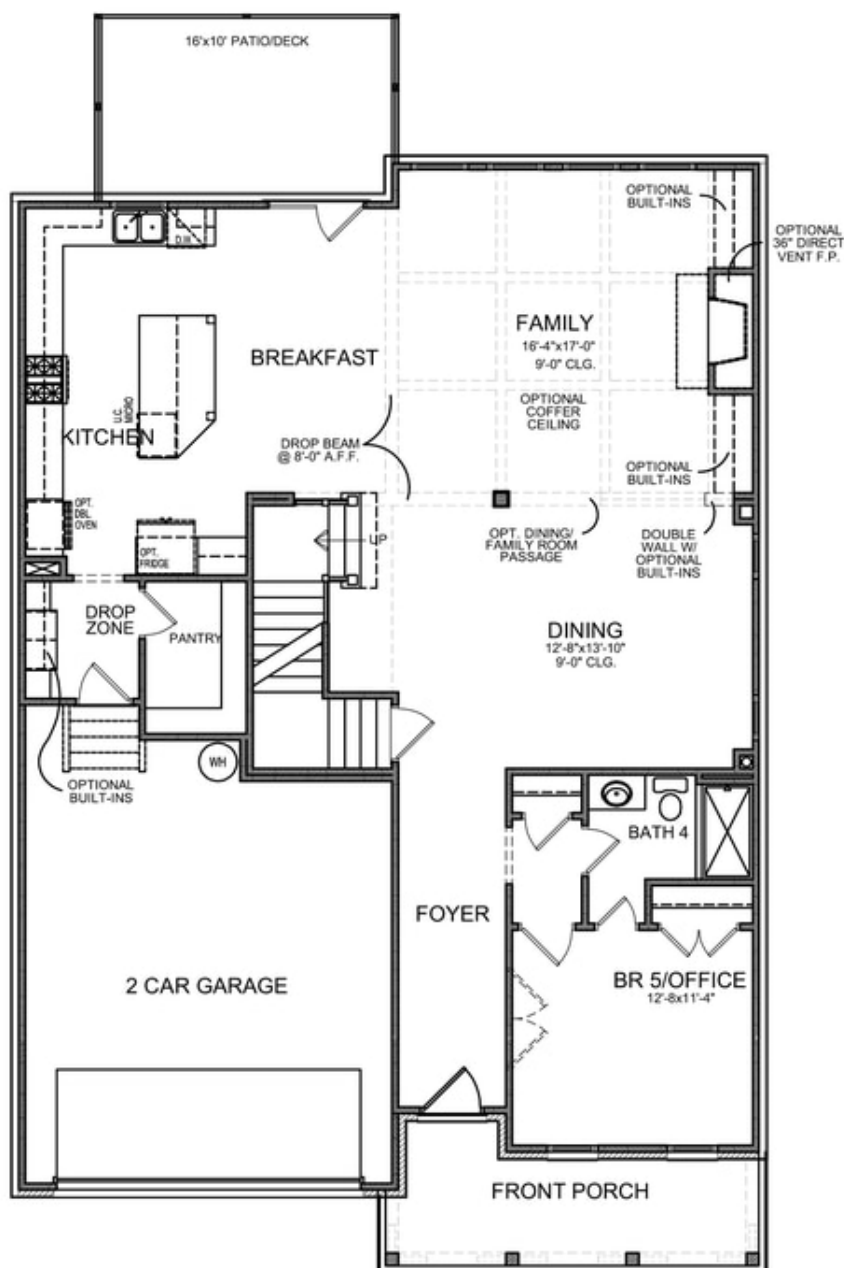
- Guest Bedroom or Flex Room on Main Level
- Gourmet Kitchen with Island Overlooking Family Room and Breakfast Room
- Huge Owner's Retreat with Elegant Bath with Unique Dual Vanities and Large His and Her Walk-In Closets
- Secondary Bedrooms Feature Private or Shared Full Bath

[Read More Online](#)

## Available Elevations

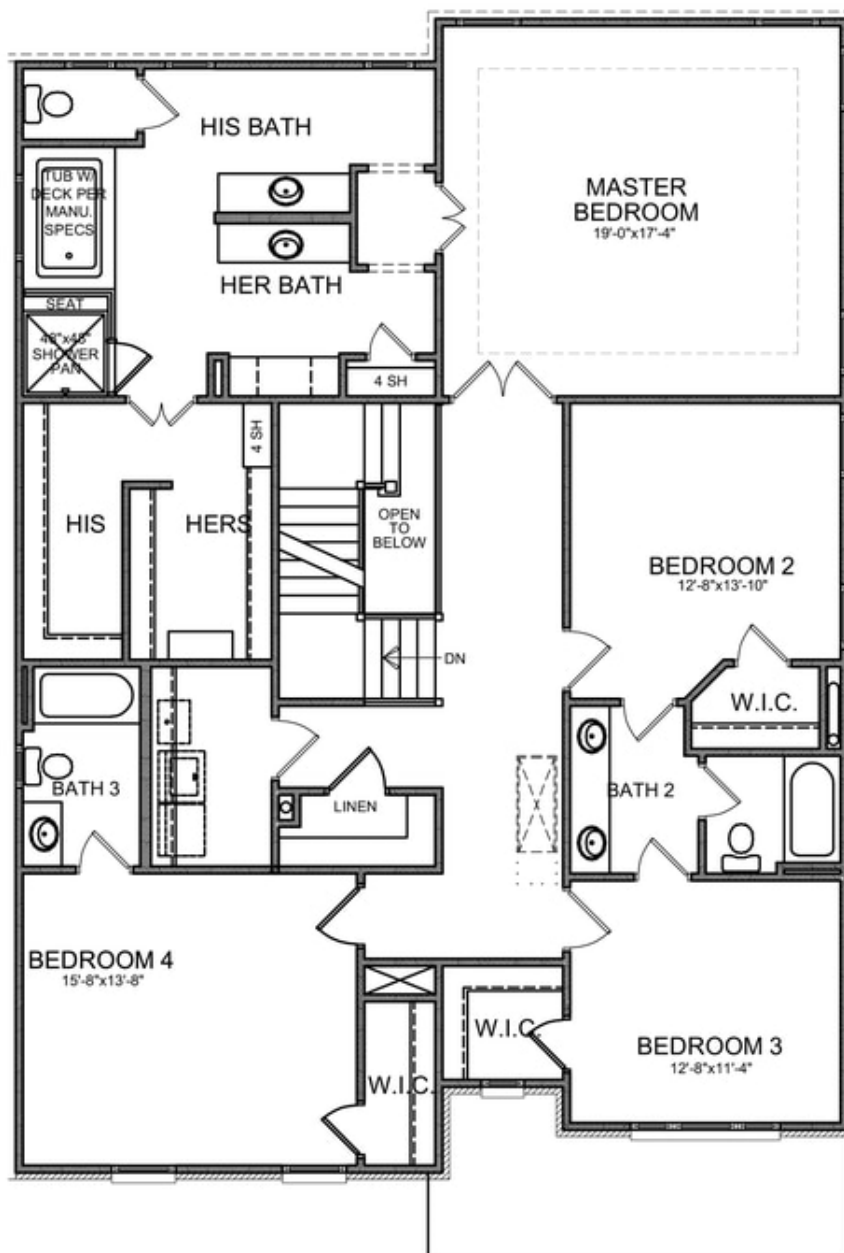


Please refer to actual blueprints for an accurate representation of home design. Home design and elevations subject to change without prior notice. Window, door and porch locations may vary by elevation. Subject to error, omission or withdrawal.



Want to Know More  
About This Home?

CONTACT OUR COMMUNITY SALES MANAGER  
Call Us @ (770) 580-9300



**Want to Know More  
About This Home?**

CONTACT OUR COMMUNITY SALES MANAGER  
Call Us @ (770) 580-9300



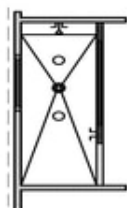
OPT Extended Kitchen



OPT Extended Porch & Awning



OPT Covered Porch



OPT Owner's Walk-In Shower



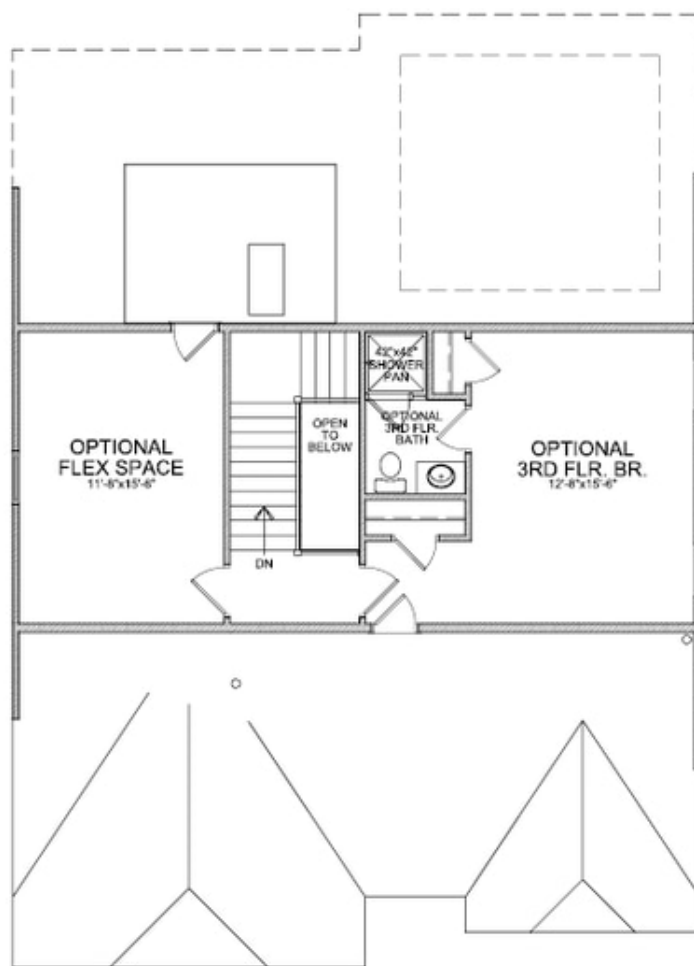
OPT Sunroom &- OPT Patio/Deck

OPT Fireplace on Sunroom

Want to Know More  
About This Home?

CONTACT OUR COMMUNITY SALES MANAGER  
Call Us @ (770) 580-9300





OPT Third Floor

\*Third Floor NOT available on Elevations B & E

**Want to Know More  
About This Home?**

CONTACT OUR COMMUNITY SALES MANAGER  
Call Us @ (770) 580-9300