



PRICED AT
\$731,690

 2516 Sq Ft

 3 Beds

 3.5 Baths

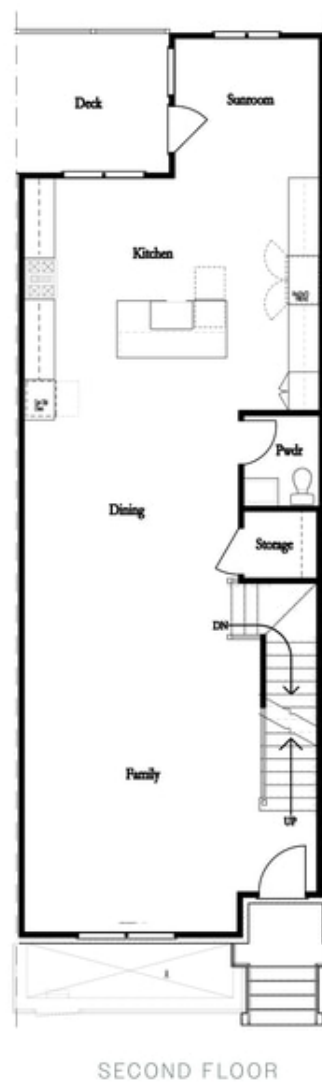
 2 Car Garage

 3.0 Story

Spring into a new home! \$15,000 incentive to use ANY WAY YOU WANT when using one of our 5-Preferred Lenders and close in April 2024. The Jacobsen II offers 3 bedrooms and 3.5 bathrooms with a rear entry 2 car garage. Entry on the main living level opens to your spacious Family and dining room with 10' ceilings & Hard Surface flooring that flows throughout the home. The kitchen has a clean and classic feel with white 42" Custom Cabinets, a gray island, Quartz Countertops, a tile backsplash in a herringbone pattern, and a GE stainless Steel appliance package. The family room has a cozy linear fireplace with 6x24 stacked quartzite and a box beam mantel. Just off the kitchen is a sunroom with access to the covered deck. Head to the upper floor for the primary suite, which offers a large walk-in closet and a stunning bathroom with a dual vanity with marble countertops, a separate tub & frameless tile shower. The 3rd bedroom on the terrace level has its own en-suite and a full bathroom with a frameless walk-in shower, making this the perfect spot for guests. Ward's Crossing by The Providence Group is located in the highly ...

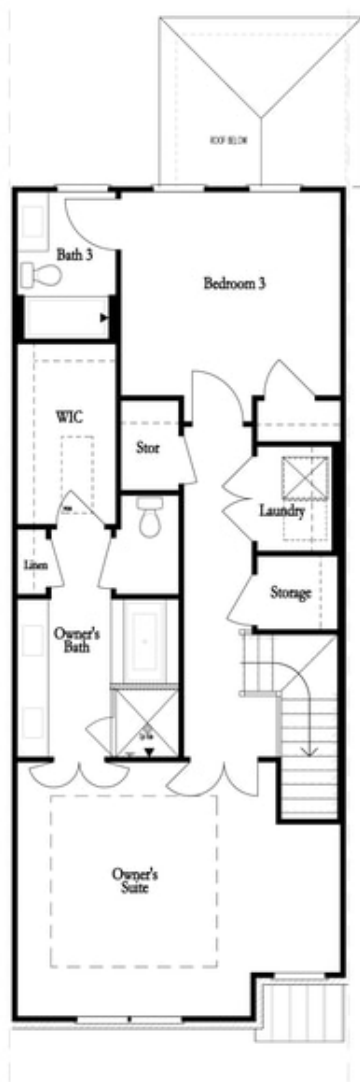
**Want to Know More
About This Home?**

CONTACT OUR COMMUNITY SALES MANAGER
Call Us @ 770.521.2151

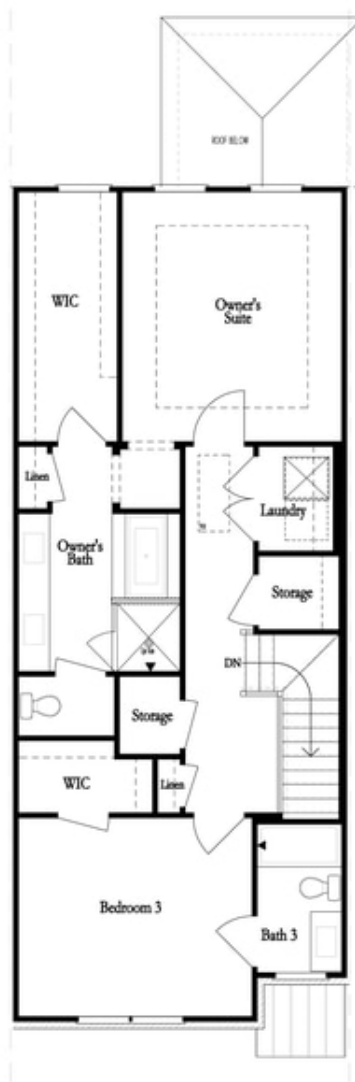


**Want to Know More
About This Home?**

CONTACT OUR COMMUNITY SALES MANAGER
Call Us @ 770.521.2151



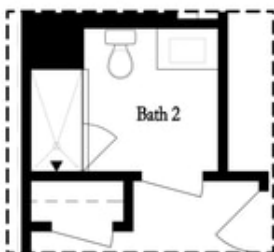
THIRD FLOOR
OWNER'S FRONT



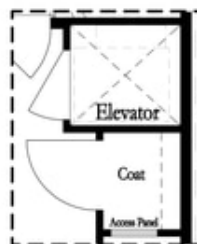
THIRD FLOOR
OWNER'S REAR

**Want to Know More
About This Home?**

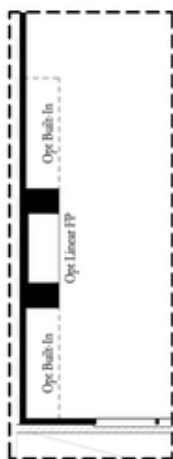
CONTACT OUR COMMUNITY SALES MANAGER
Call Us @ 770.521.2151



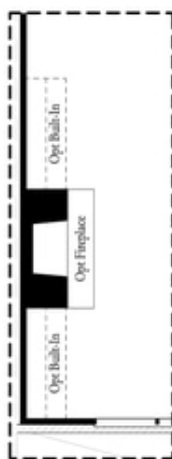
*Opt. Shower
on First Floor Bath*



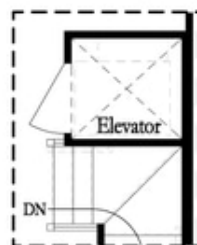
*Opt. Elevator
on First Floor*



Opt. Linear Fireplace



Opt. Fireplace

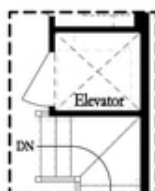


*Opt. Elevator
on Second Floor*

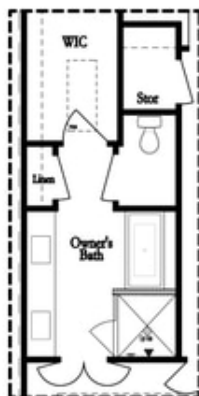
OPTIONS

**Want to Know More
About This Home?**

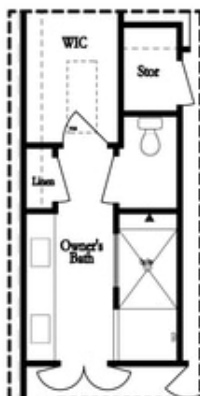
CONTACT OUR COMMUNITY SALES MANAGER
Call Us @ 770.521.2151



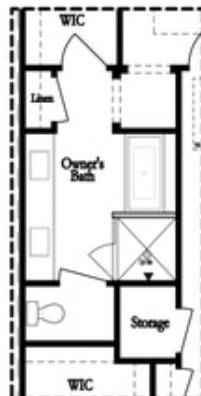
*Opt. Elevator
on Third Floor*



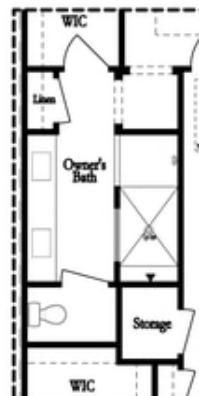
*Opt. Free Standing
Tub w/ Shower*



Opt. Walk-Through Shower



*Opt. Free Standing
Tub w/ Shower*



Opt. Walk-Through Shower

OWNER'S SUITE FRONT

OWNER'S SUITE REAR

OPTIONS

**Want to Know More
About This Home?**

CONTACT OUR COMMUNITY SALES MANAGER
Call Us @ 770.521.2151