



PRICED FROM
\$665,400

 **2,201 Sq Ft**

 **2 - 3 Beds**

 **2.5 Baths**

 **2 Car Garage**

 **3.0 Story**

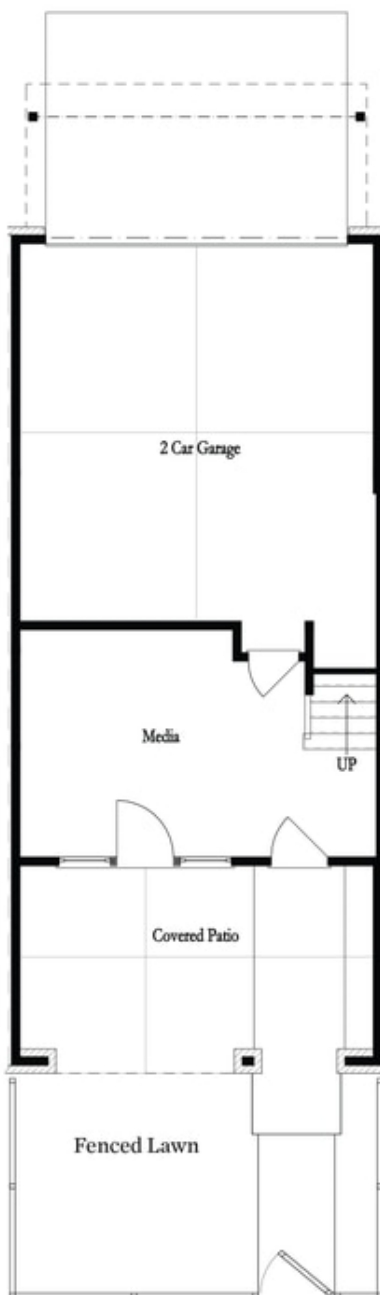
- **Gourmet Kitchen with Island**
- **Owner's Suite and Private Bath with Dual Vanities and Large Walk-In Shower**
- **Media room on Terrace Level**
- **Covered Porch**
- **Two Car Garage**

[**Read More Online**](#)

Available Elevations

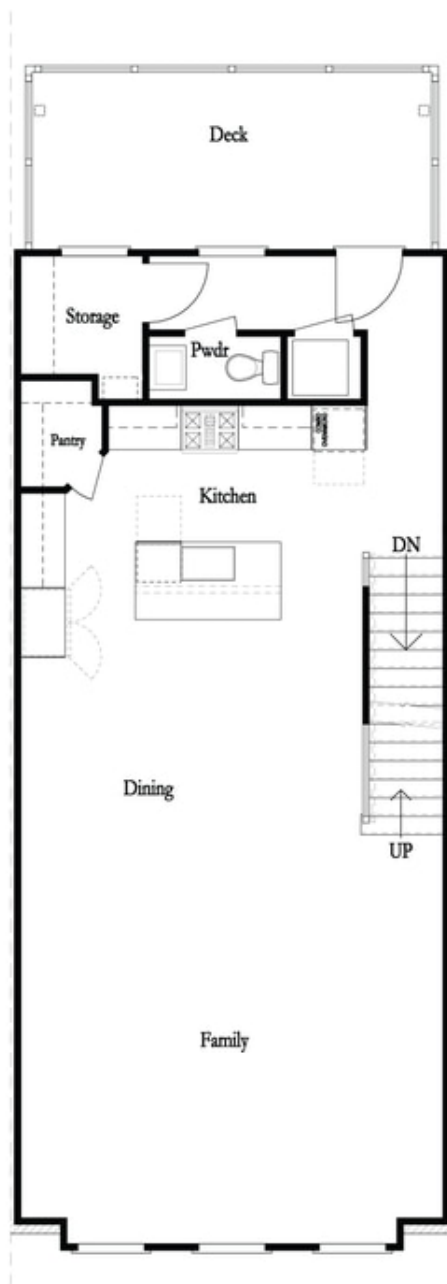


**Benton I and Barnsley I -
Elevation**



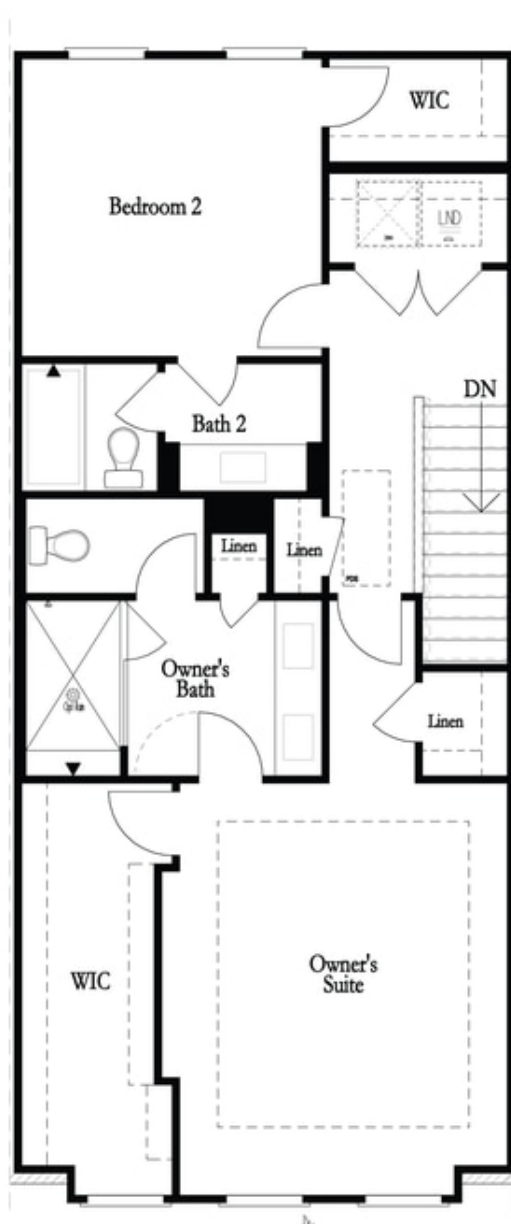
Want to Know More
About This Home?

CONTACT OUR COMMUNITY SALES MANAGER
Call Us @ (470) 514-6999



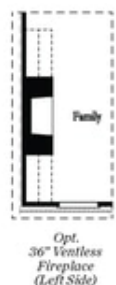
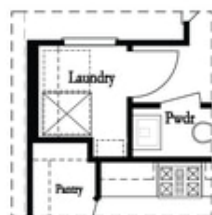
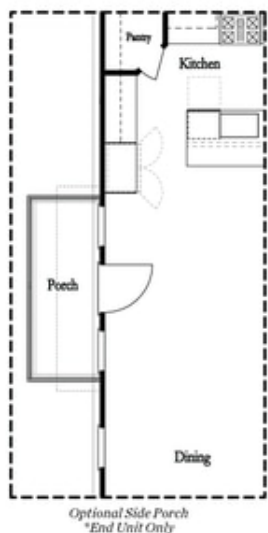
**Want to Know More
About This Home?**

CONTACT OUR COMMUNITY SALES MANAGER
Call Us @ (470) 514-6999

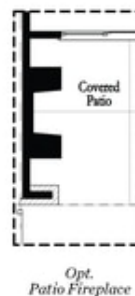
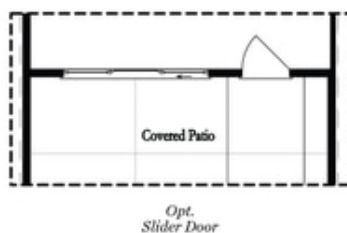
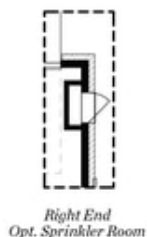
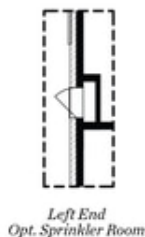


Want to Know More
About This Home?

CONTACT OUR COMMUNITY SALES MANAGER
Call Us @ (470) 514-6999



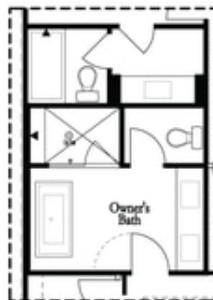
Main Level Options



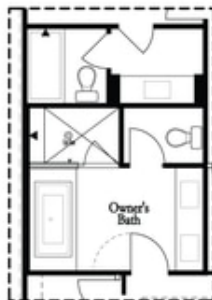
Terrace Level Options

Want to Know More
About This Home?

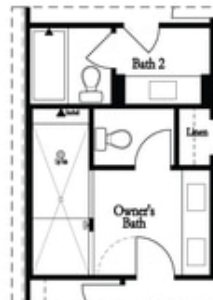
CONTACT OUR COMMUNITY SALES MANAGER
Call Us @ (470) 514-6999



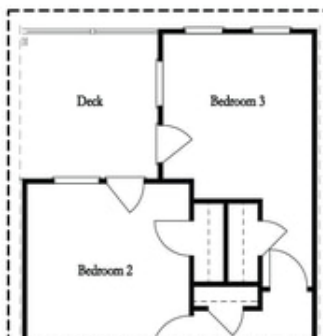
*Opt. Freestanding
Tub/Shower Combo*



*Opt. Decked
Tub/Shower Combo*



Opt. Walk-Through Shower



*Opt. Bedroom 3
*Only Available with Sunroom option
Laundry Moved to Main Level w/ this Opt.

Upper Level Options

**Want to Know More
About This Home?**

CONTACT OUR COMMUNITY SALES MANAGER
Call Us @ (470) 514-6999